

WEATHER

Day	Sept. 6	Sept. 7	Sept. 8	Sept. 9	Sept. 10	Sept. 11	Sept. 12
Min.	62	60	62	62	61	60	59
Max.	72	72	72	72	72	72	72
Precip.	0.00	0.00	0.00	0.00	0.00	0.00	0.00

The Chelsea Standard

QUOTE

"Old age consoles itself by giving good precepts for being unable to give bad examples."
—La Rochefoucauld.

HUNDRED-THIRD YEAR—No. 13

14 Pages This Week

CHELSEA, MICHIGAN, THURSDAY, SEPTEMBER 14, 1972

15c per copy

SUBSCRIPTION: \$4.00 PER YEAR

CEA Rejects School Board's Last Proposal

Chelsea Education Association rejected a general meeting on Monday, Sept. 11, after the Board of Education had rejected the last proposal of the Board of Education. This action was taken in the face of the fact that the School Board's ultimatum that unless their offer was accepted by noon Wednesday, the Association's position would be withdrawn from the table. The Association's position is that the five non-economic items represented by the last official offer of \$8,100 at the base salary and an expansion of the present index along with complete coverage for its members. The Association also lists in the

area of non-economics these five items: adequate space and equipment for all students; maternity leave; job jeopardy; rebuttal to reprimands issued; and general leaves. It is the Association's contention that the Board of Education has adequate finances to meet the competition of school districts like Dexter and Saline at the top of the salary schedule as well as remain competitive at the bottom. The Association also contends that the five non-economic items represent roughly 10 percent or less of those requests originally made in this area.

The Association is also preparing to file unfair labor practice charges against the board on two items of procedural conduct.

Glenn Kraai Promoted to DNR Office

Park Manager Glenn Kraai of the Waterloo Recreation Area has been promoted and transferred to the Department of Natural Resources Parks Division Office in Lansing, effective Aug. 27.

Kraai has supervised the Waterloo Recreation Area since March of 1968, coming from Rochester-Utica Recreation Area.

Kraai's experience in the DNR totals some 22 years and includes experience in Forest Fire and Law Enforcement along with parks.

The Kraais plan to retain residency in the Chelsea area until June of 1973 until one daughter finishes high school. The Kraais have three daughters, Glenna who now resides in Chelsea, Peggy a senior in high school and Becky who attends Beach Middle School as an 8th grader. Mrs. Kraai is on the executive staff of the Chelsea Methodist Home.

In his new position Kraai will be in charge of special programs and services. These duties consist of administering the outdoor education center programs, acting as consultant co-ordinator for location and design of new facilities. Also he will conduct studies and develop improved designs and concepts for various types of camps. Kraai also will conduct field inspections to determine compliance with department policies, procedures, rules and regulations to maintain uniform operations of parks. He will investigate complaints and problems.

Additional responsibilities include preparation of an historical and cultural park program, including inspections of sites, analysis of needs and potential. Kraai will also act as division office liaison for personnel including interviews, recruitment and training programs. He will also co-ordinate and supervise surveys and research activities of the parks division and conduct public hearings on park programs and responsibilities.

New Doctor Joins Staff at Medical Center

Chelsea Medical Clinic has a new general practitioner added to their staff. Dr. Paul Gerigk, recently of Saline and Hamburg, Germany, has joined their ranks.

Dr. Gerigk graduated in 1951 from Kiel University Medical School, Kiel, West Germany. His post-graduate training was at the University Hospital in Kiel and in Hamburg.

Coming to the U. S., Dr. Gerigk did his rotational internship at Pontiac General Hospital in Pontiac. Other training was taken in surgery and gynecology at St. Charles Hospital in Toledo and in psychiatry at Ioni State Hospital, Ionia.

From 1960 to 1971, Dr. Gerigk had a general practice in Saline. He also worked as an industrial physician for Ford, Hoover Ball and others.

This last year before coming to Chelsea, Dr. Gerigk returned to his native Germany where he was engaged in cancer research in Hamburg.

Dr. Gerigk and his wife, Hildegard, have four children: Cornelia, 5, Thomas, 6, Carol, 11, and Claudia, 15, who will be attending local schools. The family presently resides across from Chelsea High School on Washington St., in the Dr. J. V. Fisher home.

3-Year-Old Pinckney Boy Shot To Death

A three-year-old Pinckney boy was found shot to death sometime Sunday afternoon, Sept. 10, at the home of an off-duty trooper from the Brighton State Police Post.



HI-JACK VICTIMS: Secure in their home after a harrowing experience with eight hi-jackers on a Delta Airlines flight are, front row, left to right, Nikki and Taniara Cordin, and back row, left to right, Dorris, Laura and Walter Cordin.

Cordin Family Caught in Delta Airlines Hijacking

Mr. and Mrs. Walter Cordin and their three daughters, Laurie, 15, Nikki, 11 and Tamara, 6, were the unwelcome victims of a hijacking as they were aboard a Delta flight from Detroit to Miami, Thursday, Aug. 31.

The eight hijackers, three men, two women and three children under the age of three, demanded \$1 million and safe passage to Algeria in return for the safety of the passengers. Both demands were met and the hijackers have thus far alluded to the money being raised by the Algerian government, however.

In reconstructing the events of the day, Mrs. Cordin related that the family arrived at Metropolitan Airport in Detroit early in the morning of the 31st to catch the Miami-bound flight. They checked their luggage for the flight, and a minor disagreement arose as to whether Laurie should carry her small tote bag on board or check it with the rest of her luggage. She finally agreed to carry it, on her father's insistence, a motion which inadvertently saved the family from future trouble, as it was the only luggage they had for the few days after the hijacking. The rest of their luggage, of course, was in Algeria with the plane.

At the airport, Mrs. Cordin remembers noticing two attractive young black women who were neatly dressed in pant suits and who carried babies. She made an inward comment that one of the women looked like a "young Angela Davis," but then chastized herself for thinking any revolutionaries would be hanging around the Detroit airport. "That's impossible," she thought ironically, for the two later turned out to be members of the hijacking team.

Once they boarded the plane, the family was seated by one of two black men dressed as priests with clerical collars. Mrs. Cordin struck up a conversation with the young man and learned he and his companion were both from the South. They chatted about their families, and so forth for an hour or so as the flight progressed. Mrs. Cordin noticed that the man had detached his clerical collar soon after he boarded the plane leaving it hanging limply and also that he wore sloppy pants. "He was the baggiest priest I'd ever seen," she commented. His condition, however, engendered no suspicion in her.

It was not until they had been

on the ground for half an hour in Miami that anyone realized they were being hijacked, she said. The announcement threw many of the passengers into a confused panic and there were many crying, although none fainted. Mrs. Cordin, however, told her children to "save your tears until tomorrow," thinking the less confusion the better. Her husband, she reports, "glared at the hijackers" the entire time they were on the ground. The hijackers patrolled the corridors of the plane carrying 45's as they waited for authorities to raise the "hair" million dollars they demanded. They then flew to Boston and refueled and picked up the other half million, as that much money was not available in Miami.

The hijackers then announced that only one person would be allowed to go to the bathroom at one time, and Mrs. Cordin's youngest daughter, Tamara, got up to go. She inadvertently left the door open behind her, and Mrs. Cordin ran up to close it, keeping her modesty even in that tense moment. It wasn't until later that she reflected on the effect her actions might have had on the hijackers.

A 2:30 p.m. deadline was set for obtaining the money and the eight announced that every minute over that time would be marked by one person killed and thrown from the plane. The FBI avoided any violence by bringing the money out to the plane dressed only in swimsuits, so that no weapons could be concealed on their bodies. If not, "my husband would have been the first to go," reported Mrs. Cordin, "the way he was glaring at them."

Afraid that the men might want any money and jewelry the passengers had on them,

Mrs. Cordin began surreptitiously to take off her jewelry and conceal it. When her daughter saw what she was doing, she announced in a loud voice of surprise, "Why are you taking off your jewelry, Mommy?" And when the hijacker admonished her young daughter for crying, saying, "You shouldn't cry," Mrs. Cordin came back with "You shouldn't steal planes."

The passengers were finally allowed to leave the plane and as she left, Mrs. Cordin turned to the "priest" who had been seated by her and said, "May my God go with you, because you know you're wrong." The man answered simply "yes" and winked at her as she dismounted. Another turmoil was waiting for the passengers on the ground, however, as they were surrounded by security men, the FBI and newsmen. Both Mr. and Mrs. Cordin were questioned by the FBI and the family were snapped by various newsmen as they left the building. "Delta could have given better exits," she said afterward.

The hijackers subsequently took off for Boston and the rest of their money and then Algeria. The stewardesses and pilot accompanied them, yet no one was harmed during the entire maneuver. The plane and money have been returned, as stated previously, but the Algerian government has not yet extradited the suspects, two of whom are said to have former prison records.

All in all, it was a harrowing day for the family and they were relieved to get out unharmed. And, after living out of a tote bag for a few days, they were awfully glad to get their luggage back and to see the familiar, secure sights of Chelsea once more.

Grid Season Opens Friday Against Mason

The only trouble with a 9-0 record is that everyone would like to see more of the same. Chelsea High's football team gets its first chance to tackle those high expectations Friday evening, Sept. 15, at 7:30 when they face Mason High at Niehaus Memorial Field.

"We considered ourselves lucky to go unbeaten last year. We certainly don't expect to win them all this time around," Coach Phil Bareis explained this quote, which appeared in The Ann Arbor News, Sept. 12, with, "We're looking forward to one game at a time. We may not always win, but if we don't go out to win, we don't have much of an attitude."

The coach is not afraid to admit there is competition around. He knows Milan and Novi may be coming on strong. He also knows that a 9-0 record is not the only way to judge a team's success. Kids today are more sophisticated. They don't have to be told that they'll never lose.

What is important is the standings after the seventh game. "If we go into that eighth game for

the championship, then our season's been a success." That eighth game will be against Milan.

Although Chelsea High lost 17 players last year through graduation, they still have 18 returning varsity lettermen. Along with that strong nucleus, 97 boys tried out for the team. From that large field, the coaching staff picked a team of 22 seniors, 17 juniors, and three sophomores.

Bareis says, "We have a good starting line and depth too," but he admits, "The quality of the team depends a lot on injuries. We have a few boys out already with minor injuries. We've got to get them healthy and playing."

One advantage the Chelsea team has, apart from coaching and playing skill, is that the boys know the taste of victory. "Our boys are used to winning," the coach says. "They start winning all the way back in junior high."

When asked, Coach Bareis said he hasn't changed training rules over the years, except to recognize the change in hair styles. The boys' hair in front must stay two fingers width above the eyebrows. The length of the rest of the hair is left to the boy's discretion. The players are told that a tight fitting helmet is safer. If it is sitting on a pile of hair, it is harder to fasten securely.

Training rules stay pretty much the same, and so do cheerleaders. When asked about the cheerleaders, the coach replied enthusiastically, "No complaints!"

Schools Start New Program In Strings

The music department of the Chelsea Public Schools has announced that a string education program adopted by the Chelsea Board of Education at its May meeting will be starting this fall in the North and South Elementary schools.

Barry Fate of the University of Michigan will initiate and supervise the program. The music department has hopes that this program will blossom into the Chelsea High School Orchestra by the 1976 school year.

During the next few weeks, 5th grade students at the elementary schools will undergo aptitude tests. Following these, parents of selected students will meet to receive information about the program, and then both parents and students will meet to hear and choose different instruments.

Thirty students will be participating in the program this year. By the time these students reach 9th grade, with the addition of wind and brass instruments from the band, the first high school orchestra will perform.

Fate was a participant in a similar program initiated by the Michigan High School Band and Orchestra Association at Vicksburg High School, and was the recipient of the school's first National String Orchestra Association Award. He is married and lives in Ann Arbor.

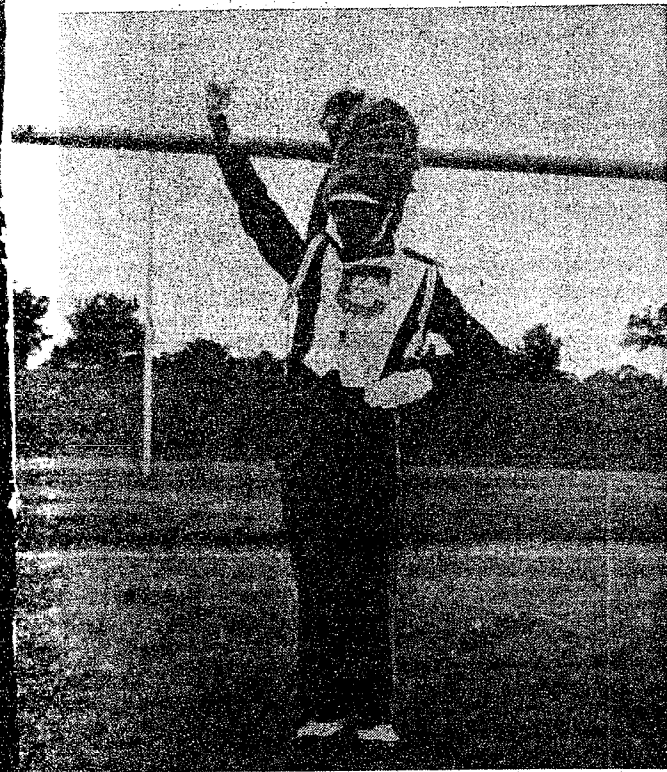
5-Year-Old Seriously Hurt In Auto Mishap

Michele Sweeney, five-year-old daughter of Mr. and Mrs. Jimmie Sweeney, 327 W. Middle, is reported in fair to poor condition in Mansfield General Hospital, Mansfield, O., after she was involved in a one-car accident on State Route 13 near Mansfield-Lahm Airport.

Sheriff's deputies, who are continuing investigation of the accident, said Special Deputy Chester Shaffer was sent on a suspicious car report at 9:28 p.m., Monday, Sept. 4, on Route 13, one-eighth mile south of Ganges-Five Points Rd. Shaffer reported an accident on the scene.

A car driven by Sweeney had apparently hit a large chuckhole and gone out of control. The car veered off the road, throwing Michele out of the rear door of the automobile and onto the road, where Michele is in the intensive care unit under treatment for a brain

(Continued on page eight)



Chelsea High's first drum major, Lee Ferguson.

Drum Major Will Head CHS Band

Chelsea High School band will make its first performance of the season, Friday, Sept. 15, as a football team takes on Mason, but chances are all eyes will be on Lee Ferguson, son of Mr. and Mrs. Lee Ferguson, as he makes his debut as Chelsea High's first drum major.

In the past, the band has been headed by majorettes, but this year they will step out in style behind the brightly-costumed drum major. Lee, the winner of last spring's try-outs, will be wearing a completely new uniform, consisting of a blue pants and jacket adorned with a white rontpiece with a large gold "C" on it, white spats and massive white and gold braided trimmed paulets. The crowning glory, however, is an elongated blue fur at decorated with yellow braid and a large yellow feathered plume. The costume, a gift of the Band Boosters, cost approximately \$135.

If Lee manages to keep his hat on his head long enough, he will lead the band in a half-time concert of old and new tunes. Featured will be: "Shenadoah," a version of the old folk song; "Sugar Blues," a blues style song; "Solid Soul," a number featuring the majorettes; "Minuet in G," a special arrangement and "Make Me Smile," a Chicago tune featuring the drums, majorettes and flags.

Drum majorettes for the 1972-73 season are Jennifer Lane, head majorette, Gina Cottonman, Suzanne Morrison, Vicki Pugh, Lori Schiller, Kathy Stoll and Jeanne Thornton. Flag bearers are Heather Brooks, head flag, Chris Buck, Debbie Clark, Ruth Freeman, Michelle Maistre, Kathy Reilly, Becky Tirt, and Carol Warywoda.

The Band Boosters, who bought Lee's outfit, also purchased the uniforms for the rest of the 160 or so members of the band. Each band member is issued a uniform with adjustable trousers and jackets sized according to waist measurements. Because the trousers are adjustable and the jackets sized, there

usually is no major adjustment problems. If minor alterations are necessary, the band member's mother usually gets the job, although some alterations are done by the Boosters. If a student shows up with a size 38 waist and a 36 inseam, and the only size available is so small as to be ridiculous, the Booster's will usually order a new costume for that individual rather than let him be constricted by a too-tight suit.

Each member is expected to keep his or her uniform clean at all times, as the Boosters have the uniforms cleaned only once a year. Other necessities are white spats and gloves that may be purchased for \$1 a pair at the beginning of each year. The student is expected to return the spats at the end of each year, but the gloves are his to keep.

Besides all the uniforms, the Band Boosters pay the expense of the band camp each summer. This alone is a \$7,000 venture, making the Booster's yearly output somewhere in between \$8,000 or \$9,000. The news of the charitable Boosters gift to the community should be enough to warm any taxpayer's heart.

Two Juveniles Nabbed By Police For Shoplifting

Officer David Peebles of the Chelsea Police arrested two juveniles Friday, Sept. 8, as they attempted to leave Polly's Market on S. Main with items they had stolen from the store.

One youth was petitioned for simple larceny in the theft of 23 packs of cigarettes and was charged with violation of curfew. The incident occurred at approximately 3:20 a.m.

The other youth was charged with simple larceny for the theft of a ring of larceny. Because of their age, police could not release their names.

3-Year-Old Pinckney Boy Shot To Death

A three-year-old Pinckney boy was found shot to death sometime Sunday afternoon, Sept. 10, at the home of an off-duty trooper from the Brighton State Police Post.

Officers from the State Police post said the death was apparently accidental.

The victim is Mark A. Waters, son of Mr. and Mrs. Robert Waters of 428 Hamburg St. The boy was found next door, 414 Hamburg St., at the home of Robert Schutt, 24, a state trooper, who had found the boy after returning home, according to reports.

The shooting is still under investigation. No further details were available.

An investigation of the circumstances is continuing.

Officer B. Sibert Leaving To Join State Police Force

Officer Bruce Sibert of the Chelsea Police Department has announced that he will resign his post Friday, Sept. 15 in order to attend school for admittance to the Michigan State Police.

Officer Sibert worked part-time during his college years for the department, but was sent to Korea soon after as a First Lieutenant in the military police.

In May of 1971, Sibert returned from Korea and once again went to work for the Chelsea police. Police Chief George Merunuck said the department was "very happy" with Sibert's work and thought he would make "an excellent officer."

No Charges Filed In Fatal Shooting

There will be no charge filed against Herman L. Renau, 70, of Freedom township for the death of 18-year-old Michael G. Rossbach of 720 Main, according to Prosecuting Attorney William F. Delhey. Delhey said an investigation has been made of the incident in which the Chelsea youth was killed by a slug fired from a military rifle by Renau, when the older man suspected him of breaking into his home early in the morning of Friday, Aug. 25. The bullet severed an artery and Rossbach died from excessive loss of blood within an hour at University Hospital in Ann Arbor.

The fatal shooting occurred moments after Rossbach and 17-year-old Marjorie Ann Risner of 730 N. Main St. had appeared at the Renau front door about 2 a.m. on Aug. 25 in an attempt to obtain help to free their automobile which was stuck in sand and gravel in an area about 150 yards from Renau's home.

Statements taken after the shooting from Miss Risner indicated that she and Rossbach had knocked on both the front and back doors of the house without getting an answer before Rossbach entered the porch and began walking toward the inside door.

"Herman Renau had reasonable cause to believe that his house had in fact been broken into," Prosecutor Delhey said. "The Rossbach boy on the other hand was unaware that he had broken the securing mechanism on the Renau door. He was under the impression that the door was stuck."

In view of the circumstances of the case, no criminal proceedings will be filed against Renau, Delhey said.

Delhey stressed, however, that each case which comes to the attention of his office is investigated separately and thoroughly and decision on prosecution is made of the individual facts of each case.

"This office will not tolerate nor does it condone the use of deadly or dangerous weapons," Delhey warned. "I implore the citizens of this county to use extreme caution before resorting to physical violence. The facts in this situation bear out the tragedy which can occur when one person thinks he is defending his property and himself and another seeking only help for himself and a companion."

The prosecutor further pointed out that the life of Rossbach could not be brought back by prosecuting Renau and hat the elderly man must live with the constant knowledge that he took the life of an innocent person seeking aid.



GEORGE HAIST

94th Birthday

The family of George Haist will hold an open house, Sunday, Sept. 17, at 1185 Fletcher Rd. from 2 to 5 p.m. in honor of Haist's 94th birthday, Sept. 20. Friends, relatives and neighbors are invited to help him celebrate his birthday. Haist is now retired from the German Farmers Mutual Fire Insurance Company of Washtenaw

County, where he held the office of secretary for 35 years. Upon his retirement, Haist's daughter, Lorraine Hoffman, held the office for a year, before her death in 1971. Haist's family consists of one son, five grandchildren and 13 great-grandchildren. Since his daughter's death, he has made his home with his son, Erwin Haist and his wife on Haist Rd.

Uncle Lew from Lima Says:

DEAR MISTER EDITOR:

The youngsters are back in school and the television is full of football, so fall can't be far behind. I used to be a feller could wait for a tip in the air and some color in the leaves to expect fall, but these new early warning signals is jest is shore. But then, the summers, ain't what they once were, neither.

The fellers at the country store Saturday night was talking about some of the changes in the way we live, and there was some feeling for the new and old. It was Ed Doolittle that brung up the subject by allowing it seemed to him from reading the papers we has had fewer riots and protest marches this summer than in recent memory. Ed said he was wondering what the reason was. He couldn't say if folks got what they wanted, didn't get what they wanted and quit trying, or everybody was so busy doing somepon else till they ain't had time to riot.

Probable, declared Clem Webster, the last was the reason Clem said the cutback in riots and marches has been made up for with a increase in ever other kind of event that can draw a crowd. He said he has read about everything from a national hollering contest to a snail race, and a mule day that had half the governors in the country represented by a mule, which Clem said may or may not have somepon to say about how the governors is running their states. Most of these events is

held in small towns. Clem said where they are about the biggest doings of the year.

Furthermore, went on Clem, remembering what Zeke Grubb's preacher said about playing game instead of fighting wars, it seems to him that the more contests and special days we're having across the country, the less trouble we're having. Even then that was using music as a excuse for a chance to git together and raise Cain. Has calmed down some, Zeke allowed. "Actual broke in Ed, folks. In this country is changing their interests. Ed said he has, noted where they ain't near as many beauty contests as they was a few years back, and a heap of clubs that used to put em on now is turning to other events like rodeos and ugly man contests. Ed asked the fellers could it be that me a really is coming to look on wimen as equal looking like equal everything? As for him, Ed allowed, he'd rather look at pritty gals than watch fellers spit watermelon seed for distance anytime.

General speaking, Mister Editor, the fellers was looking to fall, and they was agreed that whatever slack the festivals and contests leave will be took up by politicians that will be training for their November races. Ed was of the mind that ever town would do well to come up with some kind of event this fall to give us some relief from political promises and television football.

Yours truly,
Uncle Lew.

APPLY NOW

We Train Men to Work As
LIVESTOCK BUYERS

If you have some livestock experience we will train you to buy cattle, sheep and hogs.

For a local interview, write today with your background. Include your complete address and phone number.

CATTLE BUYERS, INC.
4420 Madison
Kansas City, Mo. 64111
Training Cattle and Livestock Buyers

Howell

Livestock Auction

Mason 677-8941
The Wise Owl Says Shop to Howell
SALE EVERY MONDAY, 2 p.m.
Phone 546-2470, Bim Franklin

Market Report for Sept. 11

CATTLE

Gov't to Choice Steers, \$34.50 to \$38.25
Gov't Choice Heifers, \$32 to \$34
Fed Holstein Steers, \$31 to \$33.25
U.S.-Std., \$50 and down.

COWS

Heifer Cows, \$29 to \$31
U.S.-Commercial, \$27 to \$29
Canner-Cutter, \$25 to \$27
Fat Beef Cows, \$22 to \$24

BULLS

Heavy Holsteins, \$30 to \$34
Light & Common, \$30 and down.

CALVES

Prime, \$58 to \$63
Good-Choice, \$50 to \$55
Heavy Desires, \$50 to \$70
Cull & Med., \$30 to \$50

FEEDERS

300-600 lb. Good to Choice Heifers, \$32 to \$38
400-700 lb. Good to Choice Steers, \$36 to \$44
300-500 lb. Holstein Steers, \$35 to \$43
500-800 lb. Holstein Steers, \$32 to \$35
Common-Med., \$30 and down.

SHEEP

Woolled Slaughter Lambs:
Choice-Prime, \$29 to \$31
Good-Utility, \$27 to \$29
Slaughter Ewes, \$8 to \$11
Feeder Lambs, all weights, \$27 to \$29

HOGS

200-250 lb. No. 1, \$29 to \$29.50
200-240 lb. No. 2, \$28 to \$29
240 lb. and up, \$27 to \$28
Light Hogs, \$25.50 and down.

Sows

Fancy Light, \$27 to \$27.50
300-500 lb., \$26 to \$27
500 lb. and up, \$25 to \$26

Boers and Stags

All Weights, \$24.50 to \$25.50

Feeder Pigs

Per Head, \$22 to \$27

HAY

1st Cutting, 60c to 80c
2nd Cutting, 80c to \$1.00

STRAW

Per Bale, 40c to 55c

COWS

Tested Dairy Cows, \$300 to \$400
Tested Beef Type Cows, \$250 to \$350

2 TOP TRAVEL

17th of a series

experiences in MICHIGAN

MICHIGAN'S MARINE MUSEUMS...

DOSSIN GREAT LAKES MUSEUM, DETROIT

...THROUGHOUT THE STATE ARE:

DOSSIN GREAT LAKES MUSEUM, BELLE ISLE, DETROIT
SAUGATUCK MARINE MUSEUM, ABOARD FORMER PASSENGER SHIP, S.S. KEEWATON, SAUGATUCK
S.S. VALLEY CAMP, RETIRED GREAT LAKES FREIGHTER, SAULT STE. MARIE
MYSTERY SHIP SEAPORT, ABOARD CENTURY-OLD SAILING SCHOONER, MENOMINEE
OLD LIGHTHOUSE, MACKINAW CITY

SEVEN OF EVERY 10 CHILDREN INJURED IN TRAFFIC LAST YEAR WERE PASSENGERS IN CARS. USE SEAT BELTS OR OTHER IMPROVED RESTRAINTS TO KEEP YOUR CHILDREN SAFE WHILE RIDING IN AUTOMOBILES!

Bring 'em back ALIVE!

* AS SELECTED BY AUTOMOBILE CLUB OF MICHIGAN

JUST REMINISCING

Items Taken from the Files of The Chelsea Standard

4 Years Ago...

Thursday, Sept. 19, 1968—

A new welcoming and information service will be operating in Chelsea in a few weeks as Mrs. Ronald Nix completes a Welcome Wagon training course. She will be offering a basket of gifts from merchants and information about the village to new residents.

Mrs. Herbert Paul, 152 E. Summit, has completed her 25th year of perfect attendance at Sunday school, where she teaches. The last 18 consecutive years were perfect.

Girl Scout Troop 145 met last week to discuss their summer. Girls in office were announced as follows: treasurer, Pam Hinz; assistant treasurer, Lori Werner; scribe, Marsha Prizling; assistant scribe, Denise Robbins; color guards, Diane Shoemaker, Dana Murphy, Roberta Toon, Julia Worden, and Penny Collingsworth.

Nine-year-old Kimberly Lyle has proved to be one of the local coloring champs. Kimberly, the daughter of Mr. and Mrs. Blane A. Lyle of 980 Cavanaugh Lake Rd., won the 4th grade division in a "back-to-school" coloring contest sponsored by merchants at an Ann Arbor shopping center. She will be given a \$25 gift certificate.

Members of the Chelsea School Board attended the dedication of the Dwight E. Beach school Sunday afternoon: trustees, Ed Lewis, H. Charles Powers, Herman Koenig, E. Jay Hopkins, treasurer Robert K. Taylor, president Don Irwin, and secretary Charles Lancaster.

14 Years Ago...

Thursday, Sept. 18, 1958—

Pvt. Emerson A. Wheeler, 23, son of Mr. and Mrs. Harold Wheeler, 121 Lincoln St., recently completed an eight-week automotive maintenance helpers course at the Army Armor Training Center, Ft. Knox, Ky.

Jerusalem Farm Bureau, with 12 member families and one guest family present, met Thursday evening to elect officers, who are as follows: Irvan Weiss, chairman; Glen Wiseman, vice-chairman; Mrs. Arthur Kuhl, discussion leader; Mrs. Oscar Stierle, Farm Bureau Women's Committee member; Mrs. David Pastor, alternate; George Erke, Blue Cross secretary; Mrs. Jess Miller, secretary; Mrs. David Pastor, publicity chairman; and Arthur Kuhl, minute man.

Ralph Owings, who served in the U. S. Marine Corps the past two years, has been honorably discharged and returned home Friday, Sept. 5. He is a son of Mr. and Mrs. Harold Owings, Sr., 604 S. Main St.

Chelsea varsity football team is ready and eager to start the 1958 grid season. Members of the team

are Don Erke, George Merkel, Pat Merkel, Bob Eder, Don Wood, Loren Keezer, Gus Steger, Fritz Wagner, Jim Mshar, Robin Wright, George Wilson, Wilson Morley, David McLaughlin, Gary Dault, Philip McDaniel, Charles Koenig, Larry Schrader, Matt Murphy, John Meehan, Terry Gentner, Dallice Ferris, Neil Saunders, Charles Cameron Jr., Roger Herman, and Dick Irwin.

24 Years Ago...

Thursday, Sept. 16, 1948—

Tomorrow night at 8 p.m., under the lights at Dexter, the Chelsea "Bulldogs" 1948 version of the Piskin Express, will officially open the local football season. Only nine lettermen remain from last year's successful grid squad: Robert Barlow, Walter Bauer, David Knickerbocker, Stanley Knickerbocker, Ted McClear, David Meyers, Kenneth Proctor, Robert Robbins, and Robert Stofor.

Gerald Wenk, son of Mrs. Eleanor Wenk, and Roy Guenther, son of Mr. and Mrs. Ernest Guenther, have enlisted in the U. S. Army and left Monday for Fort Knox, Ky., where they are to take their basic training.

Mr. and Mrs. Herbert Hinderer were hosts to their euchre club at a picnic held Sunday at Big Portage Lake in Jackson county. Those present were Mr. and Mrs. William Henry Seitz, Mr. and Mrs. Walter Haals and children, Audrey and Arthur, Mr. and Mrs. Norman Hinderer and son, Donald, Mr. and Mrs. Lehman Wahl, Mr. and Mrs. Walter Gage and children, Patsy and Lynn, Mr. and Mrs. Glenn Wiseman and daughter, Velma, and Mr. and Mrs. Reuben Hartman and son, Jimmy.

Election of officers of St. Mary's Altar Society was held Wednesday, Sept. 8. Those elected are: Mrs. Carl Lentz, president; Mrs. Armin Schneider, first vice-president; Mrs. William Weber, second vice-president; Mrs. R. J. Lonsway, secretary; Mrs. William Hafner, treasurer; Mrs. Willard Guest, parliamentarian; Mrs. Robert Howe, Mrs. Thomas Young, and Mrs. Raymond Liebeck, executive board.

Republican delegates from Sylvan township will be: Philip M. Broesamle, Paul C. Maroney, Walter Riemenschneider, Claude Rogers, Ransom Armstrong, and Otto Luck. Democrats will be: Paul F. Niehaus, Robert Wheeler, David Beach, J. E. McKune, L. B. Lawrence, and A. B. Shutes.

BALD EAGLE SANCTUARY

Dr. Earl L. Butz, Secretary of Agriculture has designated 10,788 acres of the Tongass National Forest in Alaska as a sanctuary for American bald eagles. Southeastern Alaska has the greatest concentration of bald eagles in North America.

MANSFIELD'S FEARS

The Senate Democratic leader, Mike Mansfield (D-Mont.), said that the way the party's Presidential aspirants "are going after each other at this time creates the possibility of a difficult situation" as the nominating convention in Miami Beach in July.

MEET YOUR FRIENDS AT INVERNESS INN
Your Innkeepers: Matt and Marge
13996 North Territorial Rd. - North Lake
YOUR FAVORITE MEALS
SHRIMP, CHICKEN & FISH DINNERS
BEER - WINE - LIQUOR
LUNCHEON SPECIALS
Open Mondays
PIZZAS

★ MICHIGAN MIRROR ★

By Elmer E. White, Secretary, Michigan Press Association

Some people just don't know when to take no for an answer. For example, there's the Michigan legislature. At present members of the legislature are prohibited from running for or being appointed to a state or local office in the middle of their term in the legislature. This means a legislator cannot run for an office such as mayor in the middle of his term or be appointed to head a state department.

The prohibition was written into the constitution in an attempt to make sure lawmakers pay attention to their jobs and not use their lawmaking job to create a cushy job for themselves somewhere in state government.

Some legislators, understandably, don't think much of the prohibition. In 1968 they put on the ballot a proposal to repeal it. The proposal lost.

They followed again this year, putting a repealer on the ballot in the May 16 primary. It lost again.

Well, you might say, it's pretty clear the people don't want to give up that particular control on the legislature. The lawmakers will probably wait at least a few more years before trying to do anything about it any more, right? Wrong.

The ballots were scarcely counted when members of the legislature started working on another ballot proposal to wipe out the restriction.

Awaiting action when the lawmakers come back for their fall session is a proposed constitution amendment which would allow them to run for all other offices in the middle of a term, but would if it is approved, it will go on he not let them be appointed to a job. November ballot.

A prime backer of the new version is Senate Republican Leader Robert Vander Laan of Grand Rapids. He believes voters knocked the proposal down in May because of the appointive provision in it.

"I think a lot of them thought this means some legislators would be involved in political payoff jobs," he said recently. Vander Laan contends the current law is "just

plain discriminatory" against legislators.

One of Vander Laan's fellow Republicans, William Ballenger of Ovid, sees the matter differently, however.

"If anything turns off the voters, turns them against us, it is the arrogance we display when we come right back with this after they turned it down," he said. "We reveal a kind of selfish interest when we do this type of thing. It ought to be a long, long time before we go to the voters with this again."

A Democrat who backed the idea of putting the proposal on the ballot again didn't think the appointive part of the amendment had anything to do with its defeat.

"I think there's just an attitude about state legislators that pervades," he said. "Voters just have a bad feeling about us."

Nice People

Where can you get the most courteous, prompt, efficient service in state government? The question may be open to argument, but a great case can be built for one particular group: secretaries and staff people for legislators.

For the most part, these are well groomed — often very pretty — bright women of all ages, size, color (and presumably creeds), whose job depends on the job of the boss: a Senator or Representative. And an important aspect of their job is to make the person they work for look as effective as possible.

Legislators are very busy people. But they must be available to their constituents or run the risk of incurring wrath with subsequent loss of votes. The legislator's staff must fill in when the legislator cannot meet these people and this is most of the time.

So the secretary meets you with a smile, explains why the legislator is not available and does her best to help. This might be, as simple as taking a message. Often it is not. If information is

required, she will seek it, and she is expected to know where much of it is available. She can make appointments if you want them. She is expected to be well informed about many things and to be able to speak with people effectively. Nearly all the secretaries who hold jobs like this fulfill their duties admirably.

Unlike most state employees, these are not covered by civil service. Logically enough, this results from the knowledge that each legislator should have the prerogative of selecting his own staff people. And since some legislators are not around for many years, the way must be left open for those who hold office.

When one compares the efficiencies and courtesies the public receives from this group, it is easy to wonder if all state government might be improved a great deal if there were much less civil service; or if civil service regulations left much more room for less efficient, less courteous, less considerate government employees to be replaced more easily than at present.

Area Resident's Husband On Cruise in Azores

Azores—Navy Lieutenant Commander John J. Mamaw, husband of the former Miss Lillian Beach of 11350 Jackson Rd., Dexter, is on a two-week cruise in the Azores in the Atlantic Ocean with home-based reserve Patrol Squadron 63.

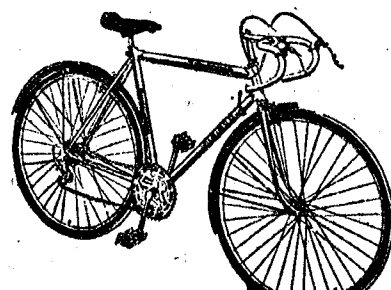


BE RIGHT SEE RIGHT
with GLASSES from

WINANS OPTICAL
(In Sylvan Motel)
Phone 475-1233
114 N. Main St.
CHELSEA, MICH.
DAVID WINANS
OPTICIAN

APPOINTMENTS NOT NECESSARY

Lightweight Bicycles!



Quality Lightweights from
England, France, Italy, Switzerland.

MIKE KOLIN'S CYCLING CENTER

325 E. HOOVER ANN ARBOR

Established 1871 **The Chelsea Standard** Telephone GR 5-8681
Excellence Award By Michigan Press Association
1951-1952-1960-1964-1965-1966
Walter P. Leonard, Editor and Publisher

Published every Thursday morning at 300 North Main Street, Chelsea, Mich. 48118, and second class postage paid at Chelsea, Mich., under the Act of March 3, 1879.

Subscription Rates (Payable in Advance)
In Michigan: One Year \$4.00, Six Months \$2.25, Single Copies \$.15
Outside Michigan: One Year \$6.00, Six Months \$3.50, Single Copies \$.20
Service men or women, anywhere, 1 year \$4.00

MEMBER **NATIONAL NEWSPAPER** Association - Founded 1885
National Advertising Representative: MICHIGAN NEWSPAPERS, INC. 257 Michigan Ave. East Lansing, Mich. 48823

WASHTENAW COMMUNITY COLLEGE

SHORT TERM MECHANIC TRAINING PROGRAM

FIRST QUARTER

Small Gas Engines 060

Starts Tuesday, September 19, 1972, Six (6) Weeks
7:00 - 10:00 p.m.

Principles and service procedures are studied with special emphasis placed on servicing live units.

Tune Up 043

Starts Thursday, September 21, 1972, Six (6) Weeks
7:00 - 10:00 p.m.

This class will cover the fundamentals necessary for proper tune up. Students will receive practical experience on their own vehicles.

Saturday's Mechanic 059

Starts Saturday, September 23, 1972, Six (6) Weeks
9:00 - 12:00 a.m.

This course covers minor testing and repair procedures, minor tune up, lubrication and cooling systems. Students will receive practical experience on their own vehicles.

LOCATION:

WASHTENAW COMMUNITY COLLEGE -
AUTOMOTIVE SERVICE CENTER
5115 Carpenter Road
Ypsilanti, Michigan

COST: \$20.00 per course

PHONE NUMBER: 434-1555

Ads
Taken
till 5 p.m.
Tuesday

IT'S EASY TO
BUY-SELL-RENT-
HIRE & FIND WITH

WANT ADS

Just
Call
GR 5-3581

WANT ADS

The
Chelsea Standard

WANT AD RATES

PAID IN ADVANCE—All regular advertisements, 50 cents for 25 words or less, each insertion. Count each figure as a word. For more than 25 words add 2 cents per word for each insertion. "Blind" ads or box number ads, 85c extra per insertion. CHARGE RATES—Same as cash in advance, with 15 cents bookkeeping charge if not paid before 5 p.m. Tuesday preceding publication. Pay in advance, send cash or money order and save 15 cents. DISPLAY WANT ADS—Rate \$1.10 per column inch, single column, 10 lines only. 8-point and 14-point light type only. No borders or boldface type. Minimum 4 lines. CARDS OF THANKS or MEMORIALS—Single paragraph style, \$1.00 per insertion for 50 words or less; 15 cents per word beyond 50 words. COPY DEADLINE—5 p.m. Tuesday week of publication.

KNAPP SHOES

For Cushion Comfort
Robert Robbins
475-7282

FORMAL WEAR

RENTAL SERVICE
Proms - Weddings - Special Events
6 different colors.

Foster's Men's Wear

Seamless
Aluminum Gutters
White, brown, black or green.
WILSON METAL SHOP
428-8468, Manchester

Headquarters for
RED WING
WORK SHOES
Foster's Men's Wear

Pine Haven Saddlery
4584 Dexter Townhall Rd.
Phone Dexter 426-4288

Complete line of English and Western equipment. 10% discount to all 4-H Club members.
Store Hours: Mon.-Sat., 9-9
Sunday, 10-9

Gem Travel Trailers
and Campers
PICK UP COVERS
4" ————— \$100.00
26" ————— \$179.00 and up

Triangle Sales

CHALET — Year-round, 1,000 sq. ft. Could be enlarged. Half Moon Lake. Partially furnished, needs finish work. \$25,000. Ph. 1-292-2375.

FOR SALE — 14-ft. boat, trailer, 40 hp. motor. \$850. Also, deluxe Wheel Camper tent trailer, \$1,275. Call 475-8126 after 4 p.m.

OLD LEHIGH HENS for sale. 40 cents each. Dwight Harr, 14300 Seymour Rd., Waterloo. -13
WAITRESSES WANTED — Must be at least 18. Apply in person. Chelsea Restaurant. 10tf

WANT ADS

ALCOA SIDING SPECIALIST — Since 1938. Service and workmanship guaranteed. William De-
man, Pl. Ann Arbor 663-6635. -x32
PATCHING and PLASTERING
Call 475-7485. 83tf

LEHMAN WAHL

Land Appraisal
Residential
and Farm
17037 West Austin Rd.
Manchester, Mich.
Area Code 313
428-8886

CLOGGED SEWER

Reynolds Sewer
Service
We Clean Sewers Without Digging
Drains Cleaned Electrically
FREE ESTIMATES
2-YEAR GUARANTEE
Phone Ann Arbor NO 2-5277
"Sewer Cleaning Is Our Business —
Not a Sideline" 83tf

GALL FRANK for all your carpet
cleaning jobs, morning or week-
end. Needs only 3 hours to dry.
Only 10c per square foot. Phone
now for free estimate, 761-4328.
All work guaranteed. 53tf

NOW

Full Time
Complete
Body Shop
Service

Stop in For An Estimate
PALMER FORD
222 S. Main St.
475-3271

FOR REAL DOLLAR SAVINGS
be sure and see us before you
buy any new or used car. Palmer
Motor Sales, Inc. Your Ford Dealer
for over 50 years. 2tf

G. G. HOPPER

Building Contractors
Phone GR 5-5581
Gregory 498-2148

Low Low

Down Payment
On New
GOLD KEY
MORTGAGES
For information ask your Realtor
or call 668-7655.

Ann Arbor Federal
Savings
Equal Housing Lender

Big Selection

Panty Hose
DANCER'S

ANTIQUES MARKET
ANN ARBOR, Sunday Sept. 17,
(Beautiful new location), Wash-
tenaw Farm Council Grounds, 6055
Saline Ann Arbor Rd., Exit 175,
1-94, south 3 miles, 11-5. Free ad-
mission. 50 acres free parking on
premises. x13

WANT ADS

HAMMOND ORGAN teachers
wanted to teach in their own
homes. Call Grinnell Brothers, Ann
Arbor. 682-5687.

Shop the
BARGAIN FLOOR
1/2 and more off
DANCER'S

CLEARANCE SALE

73's On The Way
1 LARK MINI MOTOR-HOME
Fully Equipped — Save \$\$\$
50 Gal. Gas Free
with purchase of
any of these used cars
and presentation of a
copy of this adv.

BACK-TO-SCHOOL SPECIALS

'72 DUSTER Twister, sport coupe,
818, automatic, p.s., vinyl roof,
radio, white sidewalls, 11,000
miles. New car guarantee \$2695
'71 DUSTER Sport Coupe, 22, 3-
speed on the floor, radio. Sharp. \$1795
'71 FORD Torino 500 2-dr. hardtop,
351 4-bbl., 4-speed, p.s., radio,
new white sidewall tires, dark
blue finish \$1995
'69 PLYMOUTH Satellite, 2-dr.
hardtop, 318, V-8, automatic,
p.s., vinyl roof \$1295
'67 FORD Fairlane 500, 2-dr.,
V-8, 8-speed, p.s., radio, radial
tires \$795
'68 VW station wagon, 4-speed,
radio \$895

QUALITY USED CARS

'68 CONTINENTAL 4-dr. sedan,
full power, a.c., leather inter-
ior. New steel-belted tires \$1895
'68 PONTIAC Bonneville 2-dr.
hardtop 400, V-8, automatic,
power steering, buckets, console,
vinyl roof, power windows \$1295
'67 DODGE Polara 4-dr. hardtop,
383 V-8, auto., p.s., white side-
walls, radio \$895
'66 PLYMOUTH Belvedere 4-dr.
sedan, 318 V-8, auto., p.s., ra-
dio \$595
'66 PLYMOUTH Fury II 6-pass.
wagon, 318, auto., p.s., p.b., ra-
dio, good tires \$495
'63 DART 4-dr., 6-cyl., 3-speed,
39,000 miles \$495

TRANSPORTATION SPECIALS

'66 PONTIAC station wagon, V-8,
automatic, p.s., p.b. \$125
'65 PLYMOUTH Fury III station
wagon, V-8, auto., p.s., p.b. \$150
'64 PLYMOUTH 9-Pass. wagon,
318, auto., p.s. \$150
'65 PLYMOUTH 2-dr. sedan, 318,
auto, good tires \$275
'64 OLDS 4-dr. sedan \$150
'61 FORD 4-dr. sedan, 6-cyl., 3-
speed \$95

TRUCKS

'71 CHEVY C-100, 350 V-8, Chev-
enne pkg. Sure-Grip, step bump-
er. Sharp \$2295
'65 DODGE D-100, 6-cyl., 3 speed
\$295
Village
Motor Sales, Inc.
IMPERIAL - CHRYSLER
DODGE - PLYMOUTH
Phone 475-8661
1185 Manchester Rd., Chelsea
Hours: 8 a.m. to 6 p.m.
Mon. thru Fri. Until 9 Thursday.
9 a.m. to 2 p.m. Saturday

FOR SALE — '68 Ford, 33,000 ori-
ginal miles, just like new. Good
transportation car. Ph. 1-878-3825.
x13
FOR SALE — '68 Chevrolet 1/2 ton
pickup, automatic, V-8. Mint
condition, \$1,195. Jerry Satterth-
waite, 475-5481 after 6 p.m. x13
FOR SALE — Clarinet, wood. Ph.
475-2387. -13

ELECTROLUX VACUUM CLEANERS

SALES and SERVICE
JAMES COX
Ph. 428-2931 or 428-8221
Manchester



"Don't blame this camera I got in the Standard Want Ads —
if it doesn't get all of you in!"

WANT ADS

DIAMOND ROOFING, reroofing
and repairing. Roof louvers in-
stalled. Gutters cleaned. Licensed
roofer. Call 475-1129. x45tf
HORSES FOR SALE — Quarter and
Grade. Ph. 475-1149. 12tf

A fine selection of
New and Used Cars
for immediate delivery

Harper Pontiac
Sales & Service
475-5311
Evenings, 761-2999

2-CYCO FUEL For All 2-Cycle Engines WHITE GAS

Available at
Gateway
Sports Centre, Inc.

XEROX COPIES made. Merkel
Brothers. 41tf

ROBERT A. ALDER, licensed
contractor. Residential building,
remodeling. No job too small.
18200 Boyce Rd., Gregory, Mich.
48137. Phone 498-2539. -47tf

Sold Out Again!

List your property with us for fast,
efficient service.

R. D. MILLER
REAL ESTATE
Real Estate Broker
475-7811
15775 Cavanaugh Lake Rd.
Chelsea, Mich. 9tf

SEW & SAVE!

Yard Goods,
Zippers, Thread
Notions
Good selection
DANCER'S
BASEMENT

RUMMAGE SALE — Antiques,
ceramics and miscellaneous.
Sat., Sept. 16, 9-5 p.m. 6275 Che-
lsea-Manchester Rd., at corner
Waldo Rd. x13

Rarin' To Go...

Your battery, that
is, after our depend-
able recharging!
We'll put your old battery back into
"championship form," ready to give
you many months of peppy starts,
dependable service.

UNION 76 OIL PRODUCTS

Jim's Union 76 Service
Tires — Batteries — Tune-Ups — Brake Service — Wheel Alignment
PHONE 475-3222 501 SOUTH MAIN

WANT ADS

CAR RENTAL by the day, week-
end, week or month. Full insur-
ance coverage, low rates. Call Lyle
Christwell at Palmer Motor Sales
GR 5-8271. 25tf
FOR RENT — Fair Services Center
for meetings, parties, wedding
receptions, etc. Weekdays or week-
ends. Contact John Wellnitz, phone
475-4431. 28

See
What's New
For Fall
at
DANCER'S

Housewives
Join the smart set!
Demonstrate gifts and toys part-
time for 3 months for Shopper
Shows, Inc., the prestige party
plan. Exceptional earnings, color
catalog.
Phone Ypsilanti, 482-7314
or write 1486 Andrea, Ypsilanti. x13

For Sale

Jointer planer, wood lathes, elec-
tric 10" table saw, plumber
tools, carpenter tools, small tools.
Few household items. Also 2-
wheel small trailer.

Sept. 16 and 17
525 McKinley

SPECIAL

New
Buescher Clarinets
\$155
Al Nalli Music
Chelsea 475-7215 x13

FOR SALE — '67 Valiant 2-door.
Good tires with 2 extra wheels
with good snow tires. \$495. 12 ga.
Remington pump. \$85. 14-ft. boat,
50 hp. Merc. motor, elec. start.
\$400. Ph. 475-7495. -x13

Real Estate For Sale

2-FAMILY APT. — 5 rooms and
bath in each apt. Full basement,
attached garage.
3-BEDROOM home, ranch type,
full basement, 1 1/2-car garage,
black-top drive, new modern kit-
chen.

See or Call
Kern Real Estate
or phone 475-8563 or 475-2403
616 S. Main -13tf

WANT ADS

CALL NOW
SAVE \$\$\$
Greenwood
for
Siding - Remodeling
FREE ESTIMATES
Call
Chelsea 475-2400 x7tf

TRENCHING — 4" to 16" wide, 0'
to 6' depth, footings, drain lines,
water and electrical lines. Will in-
stall. Ph. 475-7611. 11tf

MEN'S SHIRTS

Hundreds of
new ones
just in
at
DANCER'S

CLARENCE WOOD

NEW LISTING — 3 bedroom ranch
near High School. Full basement
with finished rec-room. Attached
garage, screened patio. \$39,500.
TRADE IN YOUR HOUSE on this
4-bedroom 2-story Colonial.
Family room with fireplace, 3
baths, full basement, 2-car garage.
Single or multiple family trade-in
considered.

CAVANAUGH LAKE — 2-bedroom
year 'round home. Remodeled 3
years ago. Carpeted. Full base-
ment. Ideal as a starter home.
\$19,500.
2.9 ACRE BUILDING SITE — High,
dry, wooded. An ideal spot for
your dream home.

OTHER HOMES — 3-, 4-, and 5-
bedroom homes in town and in
the country. Call for details.

CLARENCE WOOD
BROKER
Efficient PERSONAL Service
646 Flanders St., Chelsea
Phone 475-2038 or 475-8217 12tf

Contractor Servicing Chelsea, Dexter and Manchester Areas

Complete Home Remodeling
Inside and Outside
Specializing in extra living space,
recreation rooms, kitchens and
panelling. Installing all aluminum
products, 5" eavestroughs, custom-
made awnings, windows and doors,
aluminum siding in many selected
colors and styles.

Please Call
DALE COOK
Chelsea 475-8868 20tf

RUBBER STAMPS

Made on our 75-ton press

OFFICE SUPPLIES

— now restocking store —
BARGAIN COUNTER
Save 25 to 75%

Judson Formprint, Inc.
120 West Middle Street
Open Weekdays 8 a.m. to 5 p.m.
13tf

FOR SALE — 300-gal. gas tank
and stand. \$50. Call 475-7350. x13

WANT ADS

SEE US for transit mixed con-
crete. Klump Bros. Gravel Co.
Phone Chelsea 475-2580, 4920 Love-
land Rd., Grass Lake. Mich. x40tf

Fireplace Builder

Field stone mason, block and brick
mason, tuck pointing.
FREE ESTIMATES
Call 475-8025 after 3 p.m.
Patrick Grammatico

STONE WORK — Fireplaces and ma- sonry. For estimates call 475- 1106. x51tf

GAR - NETT'S Flower & Gift Shop

Your Friendly Florist.
112 E. Middle St., Chelsea
PHONE 475-1400
Funeral Flowers
Wedding Flowers
Cut Flowers (arranged or boxed)
Potted Flowering Plants
Green Plants - Corsages
WE DELIVER x9tf

TOMATOES — Picked or you pick.
Also green peppers in pecks or
bushels. Bring own containers.
21231 Kaiser Rd., Unadilla. Ph.
498-2164. x13

GARAGE SALE — 21" B&W con-
sole TV, power lawn mower,
record player, clothing, toys, misc.
items. 475-7087 221 E. Middle,
Chelsea. -x13

Special of the Week

1967 Opel Kadett, 22,000 miles. Like
new \$195

USED CARS

1971 Delta 88 Olds, 2-dr., (air
cond.) \$3495
1970 Pontiac Bonneville 2-dr., hard-
top, (air cond.) Loaded \$2395
1970 LeSabre Custom 4-dr. hardtop
top, (air cond.) Loaded \$2895
1970 Ford 4-dr. hardtop LTD
Brougham. Air cond. \$2395
1969 Olds Custom 88 4-dr. sedan.
(air cond.) \$1895
1968 LeSabre 2-dr. Vinyl top. Clean.
\$1495

1967 Electra 225 4-dr. Vinyl top.
Air cond. \$1295
1967 Electra 225 4-dr. hardtop.
(air cond.) \$1295
1967 Mercury 2-dr. hardtop \$895
1967 Pontiac Tempest station wag-
on \$895
1967 Delta 88 Olds 4-dr. \$795
1966 Olds Custom Vista Cruiser
Real nice. \$795
1967 Pontiac Catalina convert.
Sharp. (Air cond.) \$895
1966 Plymouth station wagon \$495
1963 Ford Galaxie 500 4-dr. One
owner. Clean. \$495
1965 Chev station wagon \$195
1962 Olds 88 2-dr. hardtop \$95

SPRAGUE

Buick-Olds-Opel, Inc.
1500 S. Main St., Chelsea
Phone 475-8864 13tf

POTATOES — Quality, seconds,
\$1.50 bushel, 7 a.m. to 8 p.m. No
Sunday sales. Carl Schoonover, 9
miles northwest of Chelsea on M-
52, right on Boyce Rd., left to
15567 Farnsworth Rd. Bring own
container. 9tf

FOR SALE — Corn, tomatoes,
beets, beans (Half Runners, Ball,
Kentucky Wonders), and other
vegetables. Corner of M-52 and
McKernan Dr., just south of I-94.
You pick or we pick. Steve Toth.
Phone 475-7889. -x13 9778.

YARD SALE — Fri. and Sat., Sept. 16-17, 549 N. Main, Chelsea. -x13

3-BEDROOM and 3 acres, 14064 N.
Territorial near Weikner. Fire-
place, basement, all new cabinets,
carpeting and decorations. Broker:
426-8830. Evenings: 878-3853 or 878-
x13

PALMER FORD

Open Every Evening Till 9:00
All Day Saturday
Chelsea GR 5-3271 x13

YARD SALE — Fri. and Sat., Sept.
16-17, 549 N. Main, Chelsea. -x13

FOR SALE — Corn, tomatoes,
beets, beans (Half Runners, Ball,
Kentucky Wonders), and other
vegetables. Corner of M-52 and
McKernan Dr., just south of I-94.
You pick or we pick. Steve Toth.
Phone 475-7889. -x13 9778.

SCHNEIDER'S GROCERY

CHOICE MEATS - FINE FOODS

ECKRICH
Smoked Sausage

6-OZ. CAN MINUTEMOID

Lemonade... 6 for 69c

2-LB. PKG. FARMER PEET'S RANCH STYLE

Sliced Bacon... \$1.59

LARGE

Eggs... doz. 49c

UNITED DAIRIES

Milk... 1/2 gal. 49c

121 S. MAIN ST.
PHONE 475-7600

MICHIGAN
Potatoes... 10 lbs. 49c

12-OZ. CANS

Coke... 6 pac 73c

No-Return Bottles - 8 pac, 85c

ASSORTED

Cookies, 3 pkgs. \$1.00

22-OZ.

Liquid Joy... 39c

32-OZ. DOWNY

Fabric Softener, 59c

Your Store for
Alexander & Hornung
Smoked Meats

We Accept U.S.D.A.
Food Coupons

Your
Confidence

... base it
on our long record
of personal service.

Staffan Funeral Home

"Funeral Directors for Four Generations"

124 PARK STREET PHONE GR 5-4417

WANT ADS

Chain link or redwood all sizes. Material sold for installation or we will install. 475-8147 or (617) 522-4837 estimate. x12f

ALC-Inland vinyl and linoleum. Also tile. Armstrong and other. Installed by craftsmen. Estimates, terms. Bros. 475-8621. x12f

PA TRICK for home improvement, building and maintenance. Ph. 428-8501. x12f

R SERVICE for household generators, freezers and disposers. Call Bill, 428-8814. x12f

PUTTING in my home. Ph. 368. x12f

RESPONSIBLE COUPLE seeks or farm in country within radius of Ann Arbor, starting Sept. or Oct. All house sizes and ranges considered. Lease on acceptable. Mr. Symonds, 61-4700, ext. 349. Nights or weekends: 227-6687. x12

PUTTING in my country. Cavanaugh Lake Rd. Ph. 368. x12f

AUTO PARTS for sale — 1969 Volvo with squirrels; Stewer tachometer; Edelbrock TRW 3/4 cam and lifters; Torqueflite. All for small motor. Also 340 flywheel and 340 pump and piston (77). Very reliable. Ph. 683-8228. x10f

FURNISHED apartment. Rent. Phone 475-1408. x13

SALE—About 50 acres Redwood grass near Lima Center. 475-8469 after 6 p.m. x13

WANT ADS

PROFESSIONAL CARPET cleaning service expanding to Washaw county. All sizes and types of carpets cleaned, day or night. Call 428-7269 or (617) 522-4837 for free estimate. x12f

CAR & TRUCK LEASING. For details see Lyle Christwell at Palmer Motor Sales, GR 5-8971. x12f

SKIN DISORDERS? Try Toco-Derm Vitamin E Cream, 1260 IU per tube at Chelsea Drug. x16

WEDDING, ANNIVERSARY, social or business. John's Shop can furnish the printing. Ph. 475-7500 evenings or week-ends. x17

WANTED — Two or three beehives with bees and supers. Phone Chelsea 475-2715, ask for Wilson Elwood. Call after 6 p.m. any day. x13

THE ADVISOR of Washtenaw County is looking for carriers, 11-15, to cover routes in Chelsea. If you are interested call 971-7200. x13

Wedding or Anniversary? Wedding and reception invitations available in wide range of styles and prices. 10% DISCOUNT on all list prices for wedding stationery. Come in and let us advise you on your needs. x13

The Chelsea Standard 300 N. Main Ph. GR 5-8581 x13

WANT ADS

KITCHEN HELP WANTED—Must be at least 18. Apply in person. Chelsea Restaurant. x10f

M & M GRAVEL CO. PAUL MORFAT 7 miles north of Chelsea, corner of M-52 and 10th Rd. 498-2866, home phone 475-1941, pit phone Processed road and driveway gravel, fill dirt, washed sand, pea stone, top soil, drainfield stone. Mason sand available for our own deliveries only. Loading 6 days from 8 a.m. to 6 p.m. F.O.B. or deliveries. Free estimates on road and driveway building. x13

Howell Town & Country, Inc. LARGE COUNTRY HOME built 1888, 12 rooms, five acres, two large barns, many outbuildings, near Gregory. \$5499. x13

AREA LAKE HOME—2 bedrooms, year-round log cabin, 40 feet on Highland Lake. Natural gas heat, \$17,900. ALH327. x12f

110 SQ. FT. ON THE WATER — 2 bedroom, fireplace, plaster walls, garage, many extras. ALH518. x12f

15 1/2 ACRES with four bedrooms, older house in need of repair, garage and other out buildings. \$51-0198. x13

30 ACRES — 2-story home, 3 bedrooms, remodeled kitchen, wood barn with five stalls. Property backs up to state land, near Howell. \$59786. x13

LARGE FARM — 240 acres, three-fourths of a mile road frontage, well fenced, two sets of buildings. Will sell all or will divide. LP8913. x13

5 ACRES—3-bedroom home, hardwood floors, family room with fireplace, full basement, nice trees, north of Chelsea; more land available. \$5500. x13

NEARLY NEW Colonial two-story home, balcony on second floor overlooking Joslin Lake. Country living at its best. Shown by appointment. \$5496. x13

INCOME PROPERTY — Brick, two apartments with two bedrooms each, beam ceiling, fireplace; on six acres. \$5384. x13

CALL US about investment property in this area. Vacant parcels located near Chelsea, Stockbridge and Gregory. x13

Howell Town & Country, Inc. Local Representative CARLIE WIEDMAN Phone 475-8177 426-3758 evenings x13f

BABYSITTER WANTED—Monday thru Friday for 2 pre-school children in our home, Cavanaugh Lake area. Furnish references. Will pay salary or hourly. Ph. 764-5176 after 5, 475-2981. x13

RN-LPN, full and part-time, aides, experienced or inexperienced, all shifts, training program, continuing in-service. Whitmore Lake Convalescent Center, 1-449-4431. x13

ATTENTION DEMONSTRATORS — Work with the Company that has everything! Full Color Catalog — Best Hostess Awards! Largest Selection — Highest commissions! No investment. I.B.M. system for speed and efficient operation. Call or write today Santa's Parties, Avon, Ct. 06001. Telephone 1 (203) 673-3455. Also book parties. x15

WILL DO babysitting in my home on South Main. Ph. 475-1478. x14

WANT ADS

SOMETHING NEW ALL TYPES of SIDING and ROOFING "GET OUR FREE ESTIMATE" PHONE 475-1389

LaFontaine Construction & Development Corp. LICENSED BUILDERS Chelsea x13

HOUSE FOR SALE — 3 bedroom, Carport, aluminum siding, car garage, nice large back yard. Near South school. \$23,500. Ph. 475-8496. x12f

COME! Be part of the group. The Stockbridge Squares are offering square dance lessons starting Sunday, Sept. 17, 7 to 9:30 p.m. at the Stockbridge Town Hall. \$1.50 per couple. 1st lesson free! Phone 475-7746. x13

FOR SALE—Holton trombone with case. Only used 3 mos. Ph. 475-7287. x12f

POTATOES FOR SALE — 11396 Island Lake Rd., Martin Ruhlig Jr. x15

MARSHALL REALTY (813) 878-3182 440 Dexter Rd., Pinckney DEXTER DUPLEX with lake easement to Silver Lake. Each unit has two bedrooms, living room, bath and kitchen. \$24,900. x13

GREGORY BEAUTIFUL contemporary ranch home, all-electric with 3 bedrooms, air conditioned, carpeted, 2 1/2-car attached garage. Joslin Lake privileges and lovely view. x13

CHELSEA 13 1/2-ACRE building site with lovely roll and pond potential, (approximately 1/4 acre), close to M-52. \$5,000 down on land contract. x13

GREGORY LOVELY 3-bedroom home, 2 years old, large closets, plenty of storage on a beautiful 1/4 acre lot with 8x12 storage building in mobile home park. \$3,500 down and take over payments. x13f

PINCKNEY 3-BEDROOM BRICK and aluminum home, 2 years old, on corner lot in Village, all electric, economical to heat, carpeting, ceramic tile bath, cheerful utility room with humidity control, 1 1/2-car garage, \$26,400. x13

PORTAGE LAKE 2-BEDROOM HOME, sunroom, full basement, nice yard on blacktop road, canal lot. Dexter schools. \$24,000. x13

LAKE AND EASEMENT lots at Patterson, Little Lake, Moon, Gallagher and Tamarack Lakes. x13

BUILDING SITES with 3, 4, 5, 10 or more acres in Dexter, Chelsea, Pinckney, Gregory Stockbridge area. Priced to sell. x13

MARSHALL REALTY (813) 878-3182 440 Dexter Rd., Pinckney LISTINGS WANTED! EVELYN 475-8583 JOANN 475-7493 DAVE 475-7215 x13

WANTED Key-Punch Operators in Chelsea area. Opening New Office Experienced 029 & 059 Call collect Detroit Area 522-7730 10 a.m. to 3 p.m. x14

FOR SALE — 24" black and white GE TV, one '64 Honda bike and one '66 Suzuki, very reasonable. Other small items Ph. 475-8935. x13

KITCHEN HELP WANTED. Apply in person. Chelsea Restaurant. x12f

WANT ADS

WILL DO BABYSITTING in my home. Darlene Eder. Ph. 475-7085. x14

FOR RENT — Furnished year-round cottage. Available now. Ph. 428-4583 after 5 p.m. 769-5586 during the day. x12f

TOP-QUALITY custom craftsmanship at a price you can afford. Before you add on, re-model or re-roof, call me for a free low estimate on real old-fashioned, top-flight work. Carpentry, roofing. Small or large jobs. Painting. Very fast. 426-8274 anytime. x12f

DANCE Saturday Nights at the Dexter American Legion Hall Dick McInnis at the organ Members and Guests Invited. x13

YARD SALE—3 FAMILIES. Two 8-track AM-FM home units, 1 new car 8-track. New 40 c/w. 8-track tapes. 2 sets walkie talkies. Several odds and ends. Fri. and Sat., Sept. 15-16, 9 a.m. to 6 p.m. 123 North St. x13

BEATON down carpet paths go when Blue Lustre arrives. Rent electric shampooer \$1. Dancer's 13 x13

CHELSEA NEW LISTING—Farm, 30 acres, with 5-bedroom farm home, 2 barns, outbuildings. An additional 28 acres available. Located between Chelsea and Dexter. x13

NEW LISTING — At the edge of Village, 4-bedroom remodeled home with fenced yard. x13

YOUR HORSES will feel right at home on this 45-acre setting with pond, stream, woods and barns. Home has 1,500 square feet of living. There is an additional apartment for income. Adjoins state land with riding trails. x13

1,500 SQUARE FEET of living in this 3-bedroom brick ranch, located at the edge of the Village of Chelsea, 1 1/2 baths, recreation room, attached 2-car garage, with breezeway. x13

\$36,500 Buys this 3-bedroom brick home in the Village of Chelsea, located close to shopping, 3-car garage. Immediate possession. x13

PRICE REDUCED on this Chelsea Blue Ribbon special, 1 mile from the Village, 5-bedroom, all brick bi-level, 2,000 sq. ft. formal dining room, 2 1/2 baths, 26x26 family room. A quality home throughout. 20x40 ceramic heated pool. Hillside scenic view. Black-top driveway off of black-top road. Many other refinements. x13

VARIOUS BUILDING SITES: Chelsea schools, Dexter schools, Grass Lake schools, Stockbridge schools and Manchester schools. x13f

Frisinger Realtors Chelsea 475-8681 Evenings: Mary Ann Staebler 475-1432 Hope Bushnell 475-7180 Herman Koehn 475-2621 George Frisinger 475-2903 Paul Frisinger 475-2621 x13f

FOR SALE — '39 John Deere "A" tractor, 100% restored, \$350. Jerry Satterthwaite, Phone 475-5481 after 6 p.m. x13

FOR SALE — 13.2 cu. ft. 2-door refrigerator, apt. size gas range, new 6-ft. alum. roll-up awning. 475-7087. x13

SMALL HOUSE for rent. Call 475-2683. x13

HELP WANTED — Women for spray painting and factory work. days or afternoons. Visco Corp. Ph. 688-7242, Ann Arbor, Mich. x16

FOR SALE — Kerosene heater, 5 pc. dinette set, accordion, child's maple desk, antique child's bed, also antique and collectibles. 1036 Guinan Rd., Sugar Loaf Lake, Chelsea, 475-2242. x13

FOR SALE — 1 large red "Easy Bby" man's chair, \$38. 1 woman's upholstered rocker, \$30. 2 side tables, 1 yellow Formica kitchen table (no chairs). If interested call 475-8057. x14

1968 MUSTANG for sale — Dark green hardtop, 289, 2 barrel V-8, 3 speed. Good condition. Call 475-8539 after 5 p.m. x13f

FOR SALE — Chrysler station wagon, 1988, air-conditioning, all power, cruise control, good condition. 475-7324. x13

NOTICE — Anyone who left a pie plate or cage pan at the Chelsea Community Fair may pick them up at Farmer's Supply Co., 122 Jackson St. Allen Brosamle, Fair President. x13

WANT ADS

KIRBY CLEANER \$38.50 — With power buffer polisher and cleaning tools available to responsible party for only \$38.50 cash or terms. Call Jackson collect, 782-7314, 9 a.m. to 9 p.m. Electro Grand. x13

REAL ESTATE RESTAURANT in Dexter. An ideal opportunity to get started in a going business. Terms. x13

VERY NICE HOME on water at Portage Lake. All rooms oversized. 2 baths, 2 fireplaces, family room, 2 1/2-car garage. Appliances being left. \$42,500. x13

LOT with older trailer off M-55 near Muskegon River. Approximately 10 miles west of Houghton Lake. Good hunting and fishing area. Owner must sell due to illness. x13

2 NEW HOMES also on water on Portage Lake. These homes near area beach. Both 3 bedrooms, well built, some appliances. In the 30's. x13

25 ACRES, approx. on Territorial Rd. Wooded, small pond, some fruit trees, excellent building site. \$1,350 per acre. Land contract. x13

2-ACRE PARCELS on Territorial. BUILDING SITES on Huron River Dr. SEVERAL SITES at Highland Lake in water. x13

EVINGER REAL ESTATE 7120 Dexter-Ann Arbor Rd. Dexter, Mich. 426-3286, 426-8518 x14

1972 SELECT-O-STITCH, \$46.50. Sew machine still in original factory carton. Sews stretch material. No attachments needed as all controls are built-in. Sew with one or two needles. Makes buttonholes, sew on buttons, monograms, and makes fancy stitches. Comes with a beautiful walnut sew table. Full cash price \$46.50 cash or terms available. Trade-ins accepted. Call Jackson Collect, 782-7314, 9 a.m. to 9 p.m. Electro Grand. x13

LOST — Very special long-haired gray cat recently. Clipped with tuft of fur left on end of tail. Very lovable. If found or have information on "Boob", call 475-8187. x13

3-FAMILY YARD SALE — Few antiques, tools, odds and ends. Old anvil, riding lawn mowers. Sept. 16, 10 a.m. to 5 p.m., 2038 Chelsea-Manchester Rd. x13

FOR SALE — Wheelbarrow, 5-ft. alum. ladder, garden tools, \$12. Ph. 475-7612. x13

WANTED — Unfurnished apartment by reliable women. Call daytime 475-4611, evenings 475-1146. x13

FOR SALE — Easy washer, \$50, two girls bikes, boy's Schwinn bike in need of repair, boys Cub Scout uniform, size 12. 475-2954. x13

FOR SALE — Used 30" L.P. gas range. Good condition. 475-8217 after 5:30 for app't. x13

RESPONSIBLE high school boy needs job after school and week-ends. Call 475-4792. x14

COTTAGE FOR RENT—Heat and electricity paid. 2 bedrooms. On Joslin Lake. \$150 per month. 498-2679 after 5 p.m. x13

FOR SALE — Electric bass guitar. Reasonable price. Ph. 475-4792. x13

FOR SALE — 4 h.p. Tecumseh mini chopper, new metal lake paint job. In good condition, \$140 or best offer. Call 475-2974, anytime after 7:30 p.m. x14

PIANO LESSONS in your home by experienced teacher with master's degree. Beginners to advanced. Theory, ear training also taught. 662-5850 before 10 a.m. x16

WANT ADS

GARAGE SALE. apartment, gas stove, refrigerator, Maytag wash machine, 3 heating stoves, some furniture, misc. 10200 M-52 475-2523. x13

FOR SALE — Console piano. Like new. Ph. 475-4711. x13

WANTED — 1968 or later VW bug Audi in good condition. 428-4377. x13

FOR SALE — 1968 Fiat, 124 Spider. 4 Michelin tires, 3 radial tires. New convertible vinyl top. New exhaust system. New anti-sway bars. Engine rebuilt. New clutch. Car in excellent condition. \$1,500 or best offer. 426-4377. x13

'71 FORD GALAXY 500 — Excellent condition. 4 new tires, power brakes and steering. Cruisomatic, 400 motor, vinyl top, trailer pack. \$2,295. Week ends, 475-8754. x13f

FOR SALE — 1972 Yamaha D57 twin 250cc. Less than 700 miles. Cost \$760, sell for \$550. 475-7398 after 4 p.m. x13

OFFICE FOR RENT — 2nd floor. Suitable for office or apartments. In Chelsea. Ph. 475-8210. x13

WANT ADS

FOR SALE — 3 varnished inside doors, like new, with hardware and casements. GR-5-8990. x13

HAVE ROOM for one elderly lady in 3-bed care convalescent home west of Stockbridge. Phone (517) 851-8696. x14

MOVING-Yard Sale — Friday, and Saturday, Sept. 15 and 16, 10-5, 3634 Cushing Ct., Dexter. Wooden spindle bed 1/2 size, Go-cart, children's baby furniture, old refrigerator, bar, material, furniture, tandem, etc. x13

FOR SALE—Drop-leaf table with 2 chairs, \$20; Simmons chair bed, \$18; two matching pull-up chairs, \$18; thermo-oil heater with storage tank, \$20; L.P. gas heater, \$8; 4-10 ft sections roller type conveyors 12" wide, like new. Phone 875-5560. x13

MOBILE HOME for sale — 1965 Liberty, 10'x50', furnished, \$2,500. Call after 6, 878-6622. x14

AKC Registered German Short Hair Pointer puppies. Whelped 8-4-72. Phone 475-1115. x13

ONE-HALF ACRE LOT for sale. Beautiful downtown Unadilla. Call after 6, 878-6622. x14

NO HUNTING SIGNS

Now available at Chelsea Standard 456f

ALLSTATE INSURANCE

AUTO - BOAT - COMMERCIAL LIFE - HEALTH - HOME Phone Eves. or Week-ends for N. H. MILES, Agent GR 5-8334 x14

WANTED SMALL OR MEDIUM SIZED FARM—Would consider with or without buildings. Prefer Dexter, Chelsea, Manchester or Pinckney area. Have Dearborn client who has just sold his house. Please call 426-4377, Oril Ferguson, Real x14

AND GRAVEL, Fill, Top Soil, Landscape Grading, Bulldozing. Phone 475-7618 or 475-2210. x15

FOR SALE—About 50 acres Redwood grass near Lima Center. 475-8469 after 6 p.m. x13

CONTRACTORS — Do you have work on your hands? Can you work in the home with the elderly or convalescent patient? Women 55 and over needed to live in the home by the day, week or month. Excellent working conditions, good salary. Call Home-Makers-Upholstery, 1945 Pauline, Ann Arbor, MI., 48103, 761-2285. x14

SEWING MACHINE SERVICE — Singer-trained to service all makes, clean, oil, and adjust tensions, in your home, \$5. Compare Ann Arbor at \$19.95. Why pay more? 426-8274 anytime. x12f

THORNTON

4-BEDROOM — Very, very sharp tri-level located in Lanewood. Family room, dining room, private yard and patio. x13

4-BEDROOM — Country, trees, 2 acres, 2 full baths and two 1/2 baths, 2 fireplaces, lots and lots of living area. x13

3-BEDROOM — Nice older home within village, good condition; very, very liveable. Your choice of two. x13

5-BEDROOM — Brick California style ranch home, beautiful interior, rustic and informal, situated on well landscaped corner lot. x13

3-BEDROOM — Brick ranch, 1 1/2 acres on edge of Village only 2 years old; nice family room, formal dining room. A good family home. x13

4-BEDROOM — Farm-type home situated in a wooded setting on 2 1/2 acres with 2 miles of 140' wide road, good heating plant and a large garage and shed. x13

BUILDING SITES — 2, 5, and 10 acres. x13

ON THE LAKES

YEAR AROUND HOMES — 5, 4, 3, or 2 bedrooms at Half Moon, Crooked, North or Hilland Lakes. x13

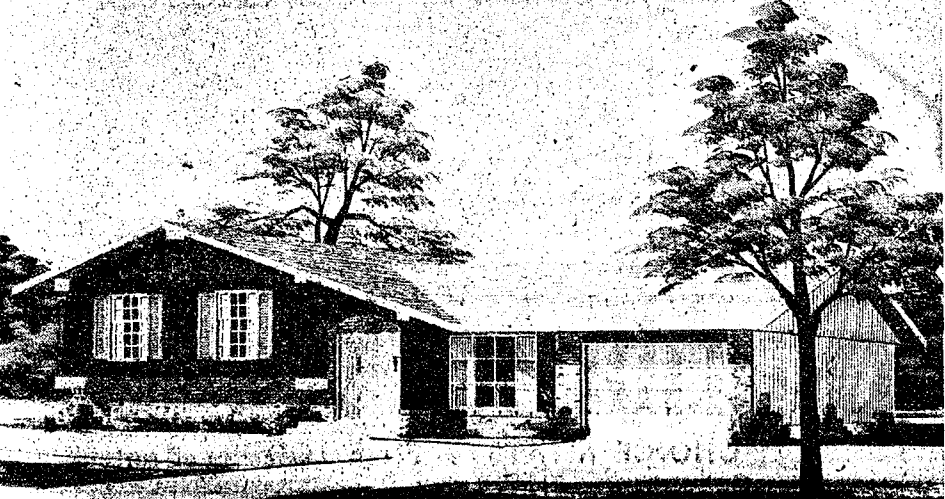
COTTAGES — 2 bedrooms. Half Moon and Big Portage Lakes. x13

LOTS — Lakemont, Cavanaugh and Portage Lake. x13

THORNTON

Realtor 475-8628 Chelsea Eves: Bob Riemschneider 475-4121 John Pierson 475-2064 Helen Lancaster 475-1198 Bob Thornton 475-4857 x13

Live in A Community That Complements Your Way of Living! CHELSEA - DEXTER



FOR SALE: NEW 3-BEDROOM TRI-LEVEL Now Under Construction

- ★ 2-Car Attached Garage
- ★ 1 1/2 Baths
- ★ Fully Carpeted
- ★ Range, Refrigerator, Dishwasher
- ★ Maintenance-Free Exterior
- ★ Complete with Storms & Screens
- ★ Full Basement
- ★ Well and Septic

Appointments At Your Convenience Office Hours: 9-5 12290 Jackson Rd., Chelsea OFFICE PHONE 475-2828 OFFICES IN CHELSEA AND BRIGHTON Blue Ribbon Homes Featuring Real Old-Fashioned Craftsmanship. W.C. WEBER CONSTRUCTION CO. "Chelsea's Premier Builder"

MARSHALL REALTY

(813) 878-3182 440 Dexter Rd., Pinckney LISTINGS WANTED! EVELYN 475-8583 JOANN 475-7493 DAVE 475-7215 x13

WANTED

Key-Punch Operators in Chelsea area. Opening New Office Experienced 029 & 059 Call collect Detroit Area 522-7730 10 a.m. to 3 p.m. x14

FOR SALE — 24" black and white GE TV, one '64 Honda bike and one '66 Suzuki, very reasonable. Other small items Ph. 475-8935. x13

KITCHEN HELP WANTED. Apply in person. Chelsea Restaurant. x12f

CHELSEA FINANCE CORP.

\$25 to \$1,500 For Any Worthwhile Purpose See or Call FRANK HILL at 475-8631 111 PARK STREET CHELSEA, MICH.

YOUR LOCAL FULL SERVICE BANK

Offers Complete Banking Facilities

- ★ Savings Accounts (4 1/2 % per annum)
- ★ Certificates of Deposit (5 % & 5 1/2 % per annum)
- ★ Checking Accounts
- ★ Christmas Club
- ★ Safety Deposit Boxes
- ★ Money Orders
- ★ Cashier Checks
- ★ Certified Checks
- ★ Auto Loans
- ★ Real Estate Mortgages
- ★ Commercial Loans
- ★ Farm Loans
- ★ Home Improvement Loans
- ★ Travellers Checks
- ★ Savings Bonds
- ★ Night Depository

★ DRIVE - UP WINDOW ★

CHELSEA STATE BANK

FDIC EQUAL HOUSING LENDER

WANT ADS

WATRESS WANTED — Must be 18. Apply at Inverness Inn, North Lake. x13

FOR SALE — Chibi mini-cycle with Bridgestone engine, like new. Also 1971 Honda 100 motor-cycle. 426-8328. x13

THANK YOU

We would like to thank the friends and neighbors of Caroline Niehaus, the Rev. Siebert, the Rebekah Lodge and the ladies of St. Paul's church, for the flowers sent, and the lunch at the church. Norman, Laverne and Robert Niehaus.

THANK YOU

It would be impossible to thank everyone who helped with donations and time at the fair, and also he patrons. Your help was appreciated and response was terrific. It was our pleasure to serve you.

Bill and Pat Robbins.

CARD OF THANKS

I wish to thank my family, neighbors, and friends for all the cards, calls, visits, remembrances and food sent to me and my family while I was in the hospital and since my return home. Gratefully appreciated,

Leila C. Bauer.

THANK YOU

I would like to thank the way to thank each one that had a part in planning and working at the Chelsea Community Fair.

A special thanks to Mrs. Pat Robbins and her helpers for overseeing the Fair Kitchen; to Mrs. Jean Botsford and Andy Ford for getting the new fence erected for the horses to exercise in; and for painting the barns; and to Mrs. Judy Eubanks and the past queens for taking care of the queen program.

Thanks to Earl Heller for installing the new equipment in the kitchen, and for all his time. Thanks to all the groups that served the meals, and to everyone who contributed food for the kitchen.

Thanks to Kappler Meat Pack-

Whitmore Lake Teachers Ask for Fact Finding

The Whitmore Lake Education Association has requested fact finding to help resolve differences over a master contract for the school district's 51 teachers.

The association and the board of education have been negotiating since June and fact finding was requested after the contract talks reached a stalemate, Jim Lanpher, chief negotiator for the WLEA, stated.

The major unresolved issues are salary and a prescription drug program. Teachers are now in the second year of a three-year pact and both unsettled items are negotiable as of this year.

Lanpher said besides are currently about \$10,000 apart, but the teachers plan to continue working.

ing for the donation of hot dogs and to DuRussel Farms for the potatoes. Thank you. I want to thank all the committee chairmen for their time and help.

Thanks to all the implement dealers for their display of farm equipment. Thanks to Price Brothers for their crying of the sale. Thanks to all the buyers who bought livestock at the sale.

Thanks to Don Johnson and Bill Ames for their help with the tractor pull. Thanks to all who took part as MC's. Thanks to the Fire Department for taking care of the parade, and to everyone who took part in it. I think it was the best in several years.

I want to thank our young people of Chelsea area who entertained us on Saturday night: the Bentley brothers, who call themselves the Blueberry Jams and play rock and roll, and my neighbor Miss Hattie Brown who played and sang country-western. Thanks Hattie.

It is impossible to mention each one person, but each little part someone plays or does helps to make 1972 a success. Thank you.

Allen Broesamle
Community Fair President

14th District Court Proceedings

Week of Sept. 6-11

Richard Harris, Saline, pled guilty to a charge of defective automobile equipment and the case was dismissed on \$3 costs.

Newman Dople, Belleville, pled guilty to careless driving and was fined \$34 and costs or five days.

Jeffrey Sigworth, Milan, pled guilty to a charge of no right light and case was dismissed with \$6 costs.

Ransom Meade, Detroit, pled guilty to charges of driving under the influence of liquor and improper registration and was fined \$16 and costs or five days on the latter and referred to probate court on the former.

Faro Randazzo, Wyandotte, pled guilty to speeding and was fined \$21 and costs or five days.

Marvin Gray, address unknown, stood mute on charges of entering without permission and assault and battery and trials were set for Oct. 12.

William Bullock was charged with escaping from Cassidy Lake Technical School. He waived examination and was bound over to circuit court with bond set at \$5,000.

Dale Vershun, Manchester, had a charge of driving under the influence of liquor dismissed by the city, but a second charge of improper driving was added.

Robert Enners, address unknown, stood mute on the charge of driving under the influence of alcohol and trial was set for Oct. 17.

Joseph Kelley, Britton, was found guilty of driving under the influence of liquor and was fined \$150 and costs or 30 days.

Raymond Roberts, Wayne, pled guilty on four charges of driving with no lights; no proof of insurance; no registration on his person; and no cycle endorsement. The latter three counts were dismissed with \$6 costs and a fine of \$10 and costs or five days was levied on the first.

Timothy Fisher, Royal Oak, pled guilty to speeding and was fined \$31 and costs or 10 days.

Edward Beeman, Chelsea, pled guilty to the charge of a mutilated license and was fined \$16 and costs or five days.

Michael Foster, Grass Lake, pled guilty to simple larceny and was fined \$15 and costs or five days.

Wesley Cope, Detroit, pled guilty to charges of drunk and disorderly and was fined \$39 or 10 days.

Jimmie Collins, Detroit, pled guilty to a charge of drunk and disorderly and was fined \$39 or 10 days.

Estelle Jordan, Detroit, was found guilty of improper passing involving an accident and was referred to probate court.

Kenneth Herrst, Chelsea, appeared before the court on a charge of reckless driving, but the case was dismissed.

Richard Marhle, Jackson, was bound over to the circuit court on a charge of passing stolen property over \$100.

Thomas Marrison, Dexter, was found guilty of driving under the influence of alcohol and not guilty on the charge of holding a suspended license and was referred to probate court.

Ivan Tucker, Westland, pled not guilty to a charge of having no life-saving devices and trial was set for Sept. 15.

Glen Burkes, Grass Lake, pled guilty to a charge of drunk and disorderly and was fined \$50 and costs or five days.

John Wilkinson pled not guilty

to a charge of drunk and disorderly and trial was set for Sept. 15.

Henry Orthing, Chelsea, pled not guilty to driving with no operator's license and trial was set for Sept. 15.

Larry Thompson and Richard Hopkins were charged with escape from Cassidy Lake Technical School. Thompson requested examination and a date was set for Sept. 13 and bond was set at \$5,000. Hopkins waived examination and was bound over to the circuit court as on Sept. 15. Bond was also set at \$5,000.

Donald Fortney was charged with escaping from Cassidy Lake Technical School and was bound over to the circuit court on Oct. 13.

Patrick Durussal, Manchester, pled guilty to charges of drunk and disorderly and squealing tires and was fined \$35 and costs or 10 days on the first charge and \$16 and costs or five days on the second.

Robert Kellum, Lipton, pled guilty to charges of no registration or proof of insurance and was dismissed with \$6 costs.

David Lefever, Chelsea, was charged with breaking and entry and requested examination and a court appointed attorney. Trial was set for Sept. 11.

Leroy Dresselhouse, Manchester, was found guilty of driving under the influence of liquor and was fined \$150 and costs and given one year's probation with mandatory at Alcohol Education Series.

Larry Johnson, Jonesville, was charged with no registration and the case was dismissed on \$6 costs.

Terry Lawrence, Grass Lake, requested a new trial and a date was set for Sept. 13. Bond was set at \$100.

Wendy Suss, New York, pled guilty to a charge of an expired driver's license and the case was dismissed with \$6 costs.

John Merriweather, Ypsilanti, pled guilty to charges of speeding and passing on a double yellow line and was fined \$41 and costs or five days on the first charge, and \$40 and costs or five days on the second.

Craig Baker, Milford, pled not guilty to a charge of speeding and trial was set for Oct. 31. He pled guilty to a charge of no registration on person and case was dismissed with \$6 costs.

Steven Delucca, Troy, changed his plea to guilty on a charge of speeding and was fined \$31 and costs or five days.

Kenneth D. Holland, Jr., Chelsea, requested examination and a court appointed attorney on a charge of forgery and trial was set for Sept. 14. Bond was set at \$1,000 cash, payable in court.

June King, Dexter, pled guilty to a charge of speeding and was fined \$21 and costs.

Richard Bertani, Ann Arbor, pled guilty to charges of speeding and passing on the right and was fined \$21 and \$16 respectively and costs.

Carl Schweiger, Chelsea, pled guilty to disregarding a red light and was fined \$16 and costs.

Dean Crocker, Dexter, pled not guilty to a charge of no registered plates and trial was set for Oct. 6.

William Har, Ann Arbor, was found guilty on the charge of excessive noise and was fined \$15 and costs to be paid by Sept. 15.

Robert Kempf, Ann Arbor, pled guilty to the charge of failing to stop at sign and was fined \$16 and costs or 5 days.

Angela Gillespie, Whitmore Lake, pled guilty to failure to stop at a stop sign and was fined \$16 and costs or five days.

Christopher Thompson, Lake-land, pled guilty to a charge of driving left of center and was fined \$16 and costs or five days.

Jack Sharpe, Ann Arbor, was found guilty of speeding and was fined \$50 and costs or 20 days.

Gary Cowan, Whitmore Lake, was found guilty of driving under the influence of liquor and fined \$200 and placed on one year's probation with attendance at Alcohol Education Series.

Robert Vollmar, Hickory Corners, pled guilty to speeding and was fined \$31 and costs or 10 days.

Clarence Steakley, Westland, pled guilty to speeding and was fined \$25 and costs.

Karen Ely, Tecumseh, pled guilty to speeding and was fined \$25 and costs.

Fred Falk, residence unknown, pled not guilty to speeding and a trial was set for Sept. 26 in Saline.

Michael Salazar, residence unknown, was found guilty of speeding and fined \$31 and costs or five days.

Paul Chafin, Horton, was arraigned for driving under the influence of liquor and a trial was set for Oct. 3, in Saline. Bond was set at \$100.

William Heli, Onsted, pled guilty to speeding and was fined \$23 and costs or five days.

Robert Griffen, pled guilty to passing in a no passing zone. His pre-sentence interview was set for Oct. 24, in Saline.

Charles Olson, Warren, was arraigned for unlawfully driving away an automobile. The examination was waived and the case will be heard in Circuit Court on Sept. 8. A bond of \$5,000 was set.

Fritz Lamparter, Saline, was charged with breaking and entering. The defendant had no attorney. The examination was waived and the case was bound over until 8:30 a.m., Sept. 15.

Keith Riddled, Ann Arbor, faced charges of breaking and entering without an attorney. The examination was waived. The case will be held over until Sept. 15, at 8:30 a.m.

James Hendrickson, Ann Arbor, was arraigned for breaking and entering and requested a court-appointed attorney. Attorney Bell asked to represent the defendant. The examination will be Monday, Sept. 11, at 9 a.m. A personal recognizance bond of \$1,000 was set.

Charles Daw pled guilty to driving under the influence of liquor and a pre-sentence interview was set for Oct. 24.

John Usaitis, Adrian, was charged with driving under the influence of liquor, and a new trial date was set for Oct. 31, at 10 a.m. in Saline.

Theodore Robinson, Saline, was found guilty of driving under the influence of liquor and fined \$56 and costs plus one year's probation with no drinking and mandatory attendance at Alcohol Education Series.

Neil Lasher, Milan, was found guilty of driving without tail lights and fined \$6 and costs, plus auto repair.

Steven Deluca, Troy, failed to appear to be charged with speeding. A bench warrant was issued.

Robert Perkins, Brooklyn, was found guilty of speeding and fined \$30 and fees or five days.

Bruce Parrett, Jackson, was arraigned for violation of probation. He changed his plea to guilty and was credited with four days already spent in jail.

Richard Higgins, Saline, pled guilty to both speeding and driv-

ing with a suspended license. He was fined \$21 and costs or five days on the first charge, and five days plus \$50 and costs on the second.

Barton Venmatic, Saline, pled guilty to speeding and was fined \$21 and costs or five days.

Joseph Bagby, Tecumseh, pled not guilty to having an improper registration, and a trial was set for Oct. 3, in Saline.

Floyd Howard, Detroit, was arraigned for possession of stolen property. Examination date was set for Sept. 13, and bond was set at \$2,500.

Thomas Farmer, Chelsea, pled guilty to failing to stop within a safe distance and was fined \$21 and costs or five days.

Rudolph Makima, Taylor, pled guilty to speeding and was fined \$35 and costs or five days.

Kenneth Holzatel, Ann Arbor, pled guilty to reckless driving and was fined \$79 and costs or 10 days.

Larry Johnson, Ann Arbor, pled guilty to reckless driving and was fined \$79 and costs or five days.

Lawrence Arnold, Ann Arbor, pled guilty to allowing an unlicensed person to operate his vehicle. He was fined \$50 and costs or five days.

Donald Jupe, residence unknown, was arraigned for having a crane on the road without a permit. A pre-sentence interview is scheduled for Oct. 30.

Roger Koepfer, Pinckney, pled not guilty to charges of driving under the influence of liquor. A bond was set at \$100 and the trial was set for Nov. 6.

Albert Lunn, III, was charged with drunk and disorderly conduct and fined \$50 and costs or ten days.

A. B. Turner, Romulus, was arraigned for improper driving and fined \$150 and costs or 20 days.

Hayden Bobo, Dexter, pled guilty to speeding and was fined \$41 and costs or 20 days.

John Lancelovich, Belleville, pled not guilty to driving under the influence of liquor, and a trial was set for Nov. 6 in Chelsea.

Russell Patterson, Ypsilanti, was charged with breaking and entering. The examination was waived and the case bound over until Sept. 15.

Donald Girbach, Saline, pled guilty to speeding and was fined \$41 and costs or 10 days.

SAIGON AND NIXON

Saigon—According to a straw poll taken at a downtown USO club from July 16-30, the 1,051 American servicemen visitors gave President Nixon 70 per cent of the votes and Sen. George McGovern 16 per cent. Three per cent (written votes) went to Gov. George Wallace.



40th ANNIVERSARY: Mr. and Mrs. Reuben Wolff, 119 Madison, were given a surprise party by their children in honor of their 40th wedding anniversary, Thursday, Sept. 14. The reception was held in the Madison home. Mr. and Mrs. Wolff were married in 1932 by the Rev. Paul Grabowski in Chelsea. Their four children, who helped them celebrate their anniversary, are Norman and LaVern Wolff, Mrs. Ralph Knipper and Mrs. Carl Barksma, who was unable to attend.

Television programming at Central Michigan University includes a closed-circuit instructional network and WCMU-TV, Channel 14, a UHF broadcast station. The closed-circuit television network carries college classes to campus buildings. Owned and operated by CMU, Channel 14 began broadcasting in March, 1967. The station is on the air approximately 60 hours a week the year round, serving a potential audience of almost 200,000.

Most of the worries that afflict our minds never exist outside of our heads.

money-making
Right start
FEEDS

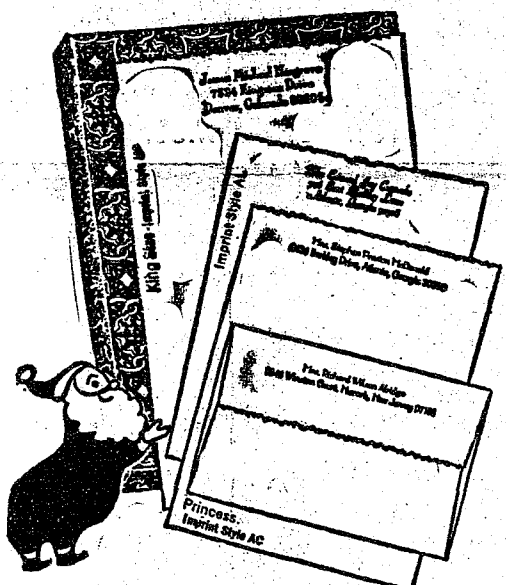
Step up milk production, with Dairy Feeds, scientifically formulated, balanced and blended to make more milk, and more profits.

Complete feeding rations for all your livestock, poultry.

FARMERS' SUPPLY CO.

PHONE GR 5-5511

The Chelsea Standard



Pre-Christmas Gift Sale

Rytex Deckle Edge Vellum
Personalized Stationery

Save 50% **\$5.00** (regularly \$10.00)

150 Princess sheets & 100 envelopes... or
100 King size sheets & 100 envelopes

This way you can give a lot of goodness—it's high quality paper; a lot of style; a lot of usefulness. But most of all you give a gift that says, "I had just you in mind." Because Rytex is custom-made for the individual. Makes an ideal gift for men or women—don't forget the men on your list!

Marvelously deckled paper in white, blue, or grey. Smartly imprinted in blue or grey ink in choice of imprint styles shown. Princess or King size sheets—the choice is yours. You can't go wrong. Because any Rytex Personalized stationery style you choose is correct.

Beautifully Gift Boxed.

MAIL ORDER COUPON

THE CHELSEA STANDARD
CHELSEA, MICH. 48118

DECKLE EDGE VELLUM...Boxes at sale price of \$5 per box.

*SPECIAL BONUS... (check) include 50 matching, unprinted, sheets for only \$1.00 more.

CHECK ☐ Princess White (9400) ☐ King White (9100)
YOUR ☐ Princess Blue (9450) ☐ King Blue (9150)
CHOICE ☐ Princess Grey (9460) ☐ King Grey (9160)

Ink: ☐ Grey Ink ☐ Blue Ink
☐ Imprint MC ☐ Imprint AL ☐ Imprint AC

Imprint Name _____
Street _____
City _____ State _____ Zip _____

Ordered by: _____
Street _____
City _____ State _____ Zip _____

☐ Charge ☐ Payment enclosed (Sorry, no C.O.D.'s)
(Please include sales tax)

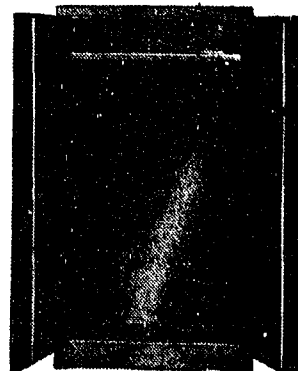


DOOR MIRRORS

16"x60" PLAIN GLASS MIRRORS\$ 9.98
16"x60" BEVEL EDGE MIRRORS\$12.98
16"x56" PLATE GLASS MIRRORS\$17.50
16"x58" PLATE GLASS MIRRORS\$19.98

WARDROBES

22" wide, walnut finish\$21.95
30" wide, walnut finish\$29.95
36" wide, walnut finish\$34.50
40" wide, walnut finish\$39.90
42" wide, walnut grained finish\$65.00



MERKEL BROS.

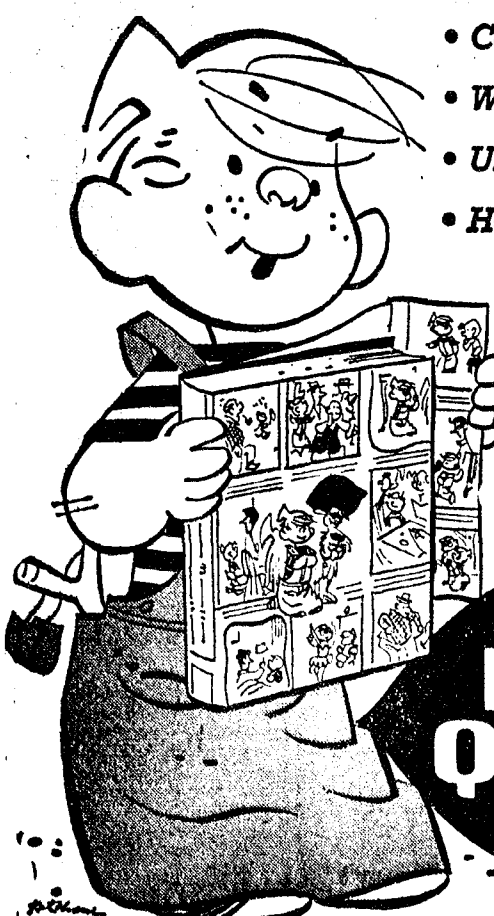
Open Monday & Friday Until 9

Phone 475-8621

NOW WITH ANY PURCHASE AT DAIRY QUEEN*

FREE DENNIS MENACE FUN SHEET

Featuring Dennis and his friends.



- Color 'em in
- Write your own jokes
- Use 'em for book covers
- Hang 'em on your wall

Get your free "Fun Sheet" at participating DAIRY QUEENS where the fun comes in all sorts of great-tasting flavors. But hurry, the supply is limited. "Let's all go to the DAIRY QUEEN"

Dairy Queen

*Reg. U.S. Pat. Off.
Am. D.Q. Corp.
Copyright 1972, Am. D.Q. Corp.

901 SOUTH MAIN ST., CHELSEA

Altar Society Elects Officers For Coming Year

Monthly meeting of St. Altar Society was held Tuesday evening, Sept. 11 in the hall with 23 members present. After Father F. Wahowiak's opening remarks, the minutes of the previous meeting were read and approved. The September Altar Society committee are Mrs. Edward Rybka and Mrs. Henry Rybka. Church Council representative, reported on the summer of the Council meetings. Mrs. George Brettschneider reported on the last bake and sale held in June. The conclusion of old business was presented by Mrs. Gaken, presented the out-president, Mrs. Henry La. with a green planter arrangement.

New slate of officers were elected for the 1972-73 season are as follows: president, L. Staffan; first vice-president, Mrs. L. D. Guinan; second vice-president, Mrs. Richard secretary, Mrs. Patricia; treasurer, Mrs. Del-Erikson; executive committee, Mrs. Henry LaRose, Mrs. Merkel, Mrs. Henry Rybka, Mrs. Wayne and historian, Mrs. Wal-eb, Sr.

Engagement Told For Denise Paul

Mr. and Mrs. Duane F. Paul, 1721 Kietmiller Rd., Grass Lake, announce the engagement of their daughter, Denise Nanette, to Mr. R. James, the son of Mr. and Mrs. George E. James of Han-son. The wedding will take place on Sept. 17.

Female Receives PhDs from Purdue University

Lynn Lipphart Berk, daughter of Mr. and Mrs. Alfred Lipphart, 161 Orchard Rd., and her husband, Toby Berk, were recent graduates of Purdue University in West Lafayette, Ind. Berk received her degree in literature, while her husband's was in computer science. They have both subsequently received appointments as assistant professors at the Florida International University in Miami.



Mrs. James Evan Knott

Janice Kay McGaw, James Knott Wed in Friday Evening Ceremony

Janice Kay McGaw, daughter of Mr. and Mrs. Thomas J. McGaw of 312 Washington, became the bride of James Evan Knott, 119 Wilkinson St., son of Mrs. Evan Knott of 1207 Kermwood Dr., in an evening ceremony, Friday, Sept. 8 in the First Methodist church. The Rev. Clive Dickins officiated.

The bride chose an A-line gown of organza with a chantilly lace overlay, oval neckline circled with pearls, full-length lace sleeves and a Watteau chapel train. A Camelot headpiece of pearls secured the illusion veil. The bride carried a French hand bouquet of white miniature carnations, gold daisies and pompons. Women Abbey roses and stephanitis accented with silk flowers and white velvet tubing.

Miss Mary Lou Slane of 11213 ers and white velvet tubing. Dexter-Chelsea Rd., acted as the maid of honor. She was attired in a floor-length gown of Nile green with embroidered batiste, scoop neckline, long fitted sleeves and bell skirt and carried a French hand-bouquet of gold and bronze pompons accented with Women Abbey roses and apple green streamers.

Mrs. Brad McGibney, sister of the bride, and the Misses Amy Detling and Jane Knott, sister of the bridegroom, were bridesmaids. They had the same costumes and flowers as the maid of honor.

For the ceremony, the bride's mother chose a floor-length gown of citrus trimmed with antique gold braid. She carried a purse corsage of yellow sweetheart roses and stephanitis. The bridegroom's mother wore a floor-length A-line gown of French blue with silver trim. Her corsage was of pink sweetheart roses and baby's breath.

James Campbell served as best man and Robert Rush, Thomas Dittman and Steven Dygert were ushers. All are from Chelsea.

Immediately after the ceremony, a reception was held at the Chelsea Rod and Gun Club. Attending at the reception were Nancy Knott, guest book; Mrs. Robert McGaw, punch; Mrs. Thomas Lyons, cake and Miss Cindy Reynolds, coffee.

For her honeymoon in Toronto, the bride chose a navy-blue blazer with red and white pin-stripes and white wool knit slacks with navy blue accessories.

The new Mrs. Knott is a 1972 Chelsea High school graduate and is associated with the Chelsea Junior Co. as her husband. The bridegroom is a 1965 graduate of Chelsea High school and a 1969 graduate of Eastern Michigan University. He was a first lieutenant in the army and served in Vietnam.

Senior Citizen Activities

Eighteen members met Tuesday, Aug. 29 at the Korner House for the August business meeting. New by-laws were read by Tony O'Dell, were voted on and accepted.

Plans were made for a September social party led by committee members, Nina Matthews and Tony O'Dell, and for the September birthday party, pot-luck, scheduled for Thursday, Sept. 21 at 8:30 p.m. Committee for the birthday party includes Bertha K. Riemenschneider, Inez Rank, and Bernice Schneider.

Subscribe today to The Standard.

Magic Mirror Beauty Salon

Open Monday thru Friday
9 a.m. to 9 p.m.
Saturday, 8 a.m. to 3 p.m.
PHONE 665-0816

Club Social Activities

MODERN MOTHERS

The Modern Mothers Child Study Club met for their first meeting of the 1972-73 year, Tuesday, Sept. 12, at the home of Mrs. Max Plank. Mrs. Edwin Brown was co-hostess at the pot-luck dinner which 19 members attended.

Mrs. Ronald Harris and Mrs. Robert Riemenschneider were welcomed as new members. A n d Martha and James Verhoeven gave a demonstration of making sand candles. Different types of scented wicks and coloring were discussed.

Guests at the meeting were Mrs. William Coelius, Mrs. Samuel Coomes, Mrs. Jerry Evisiver, Mrs. Peter Flintoff, Mrs. Basil Greenleaf, Miss Karen Hume, Mrs. Billie Stehower, Mrs. Norman Wilson and Mrs. Russell Pichlik. Program booklets for the season were distributed by Mrs. Plank.

The next meeting is scheduled for Tuesday, Sept. 26, at the home of Mrs. Donald Kvarnberg.

KINDER KLUB

Kinder Klub held their first meeting of the new 1972-73 year Tuesday, Sept. 12, at the home of Mrs. Carol Marshall. Mrs. Laura Downer was co-hostess for the combination pot-luck supper, business meeting which 11 members attended.

The next meeting is scheduled for Tuesday, Oct. 10 at the home of Mrs. Carol Hoffman. Guests are welcome.

LYNDON FARM BUREAU

Eighteen members were present at the Lyndon Farm Bureau discussion, pot-luck supper and business meeting held Saturday, Sept. 9, in the Lima Township Hall.

A discussion was held on the no-fault insurance bill and the majority favored the bill. Carl Schoonover spoke on up-dating the zoning in Lyndon, and business of the month was handled.

The group scheduled another pot-luck supper for Saturday, Oct. 14 at 7 p.m. in the Lima Township Hall.

VFW Auxiliary Plans Fall Events

A business meeting of the local Veterans of Foreign Wars Auxiliary was held, Monday, Sept. 11, with nine members present.

It was announced the National President, Lois Reid, will be making her official visit to Michigan during the Pow-Wow being held Sept. 29 through Oct. 1 at Boyne Mountain. Planning to attend are Geraldine Klink and Mary Kniss, treasurer.

The Sixth District meeting will be held Sept. 17, in the Civic Center, Lansing. Those planning to attend are Geraldine Klink, Mary Kniss, Eulahlee Packard, and Lucy Platt.

A meeting for auxiliary members will be held at Michigan Veterans Facility Hospital, Grand Rapids on Oct. 10 at 9:30 a.m., followed by a tour, lunch and recreation at 2:30 p.m.

A meeting similar to the Michigan Veterans Facility Hospital, will be held at the Veterans Administration Hospital, Battle Creek, on Sept. 16, at 9:30 a.m.

The local auxiliary has been invited to the Community Congregational church in Pinckney for the third annual Veterans Day Sunday Service of Worship on Sunday, Oct. 29, at 10:30 a.m., with the Auxiliary Colors to participate in the procession into the church.

Five dollars was voted out to be sent to the Battle Creek indigent patients for Christmas. The group also decided to buy one large flag to replace the present three by five and 12 classroom flags, four of which are to be given to the kindergarten classrooms in St. Mary school building.

The following were appointed to act committee for the September social-meeting, Sept. 25: Dorothy Lenz, chairman, to be assisted by Clotael Frayer, Joanne Warywoda, and Norma Seyfried. This meeting will be held in the Rebekah Hall and guests will be welcome.

The next business meeting will be Oct. 9, and will be the final inspection meeting by the Sixth District President, Mildred Sebrill, of Lansing.

Red, white and blue continue to be a popular color combination for sport clothes.

HELLER ELECTRIC & INSULATING

Now
Edison Trained
Electric Heat
Dealer

Call us for estimates on all types of wiring.

We insulate old or new homes with Thermation insulation and install electric heating systems.

CALL 475-7978
OR 475-2006

CHILD STUDY CLUB

Chelsea Child Study Club began its year on Tuesday, Sept. 12 with a pot-luck dinner at the home of Mrs. Charles Cox, with 35 members present.

After a brief business meeting and entertaining program, dessert was served by the co-hostesses, Mrs. Jorjald Beaumont and Mrs. Robert Meyers.

The next meeting will be Tuesday, Sept. 26, at the home of Mrs. Richard Borton. Members are encouraged to bring guests to this program on child abuse.

WOMAN'S CLUB

Chelsea Woman's Club started its year off with a picnic at the home of Mrs. Steven Pawlow-ski, on Tuesday, Sept. 12. Ginny Johnson and Mary Turcott were co-hostesses. The occasion was enjoyed by 31 members and three guests.

Guests were Mrs. Lowell Spike, Mrs. Ralph Oesterle, and Gunilla Bohlin, an exchange student from Sweden who is residing with Mrs. Robert Koch.

The next meeting will be held Sept. 26, in the club room at the library. The program will be "Women in Medicine."

Inverness Ladies Golf Tournament Winners Announced

Results of this summer's Inverness Ladies Golf Tournament have been announced as follows: Match-play Tournament, Championship flight: Champion, Mrs. Robert Adams, runner-up, Mrs. William Hunt; 1st flight winner, Mrs. Max Frisinger; runner-up, Mrs. George Carignan; 2nd flight winner, Mrs. Ed Preuss, runner-up, Mrs. Dan Denton; 3rd flight winner, Mrs. Gene Schneider, runner-up, Mrs. Milton Rabbitt; 4th flight winner, Mrs. Sheridan Springer, runner-up, Mrs. Frank Waldecker; 5th flight winner, Mrs. Patrick Turcott, runner-up, Mrs. Fritz McMullen.

Low-Gross Tournament, Championship flight: champion, Mrs. Pat Farrell, runner-up, Mrs. William Hunter; 1st flight winner, Mrs. Ed Preuss; runner-up, Mrs. Dan Denton; 2nd flight winner, Mrs. Robert Daniels, runner-up, Mrs. John Keusch; 3rd flight winner, Mrs. Patrick Turcott, runner-up, Mrs. Robert Powers.

Capes continue to be popular. Some are knitted and others are fashioned of fabrics. They may be wide and long or short.



50th ANNIVERSARY: Mr. and Mrs. George Austin Bott, Sr. of Harrison observed their 50th wedding anniversary on Wednesday, Sept. 6. An open house will be given in their honor at the Stockbridge American Legion Hall on Sunday, Sept. 17, from 1 to 4 p.m. The couple's sons, Adelbert W. and Norman A., of Chelsea, George, Jr., of Dansville, Duane of Stockbridge and Delois of Harrison, will host the event to which friends, relatives and acquaintances are invited. Mr. Bott is a retired farmer who also worked at North American Rockwell from which he retired in 1963. He and the former Myrtle Belle Norton were wed in Stockbridge on Sept. 6, 1922. The Botts have made their home in Harrison since retirement. Previously they lived in Stockbridge, Mason and the Waterloo area. Mr. and Mrs. Bott have 10 grandchildren.

Jane Haselschwardt Admitted to MSU Honors College

Miss Jane Haselschwardt, daughter of Mr. and Mrs. Howard Haselschwardt of 754 Book, a Michigan State University sophomore majoring in English for secondary education, has been admitted to the MSU Honors College. She is one of 256 superior students admitted to the schools ranks this summer term.

The honors college is open to all students who have attained sophomore standing with a high academic average and have shown commitment to both breadth and in their undergraduate studies.

Academically, these students are in the top five percent of the student body. The Honors College is designed to give these undergraduates an opportunity to develop with an advisor an academic program designed specifically to their own interests and goals.

Telephone Your Club News
To GR 5-3581.

Boy Scout Troop Plays Waste Paper Pick-Up

Chelsea area Boy Scout Troop 478 will meet this year at South school at 7 p.m. on Monday evenings. Charles Stoner will be scoutmaster with Cecil Cobb as committee chairman.

Kicking off the 1972 season will be a waste paper drive on Saturday, Sept. 16, and a court of awards on Monday, Sept. 18. All parents are invited to come and share the scout's enjoyment of this past summer's achievements.

Assisting in operation of troop affairs this year will be Bill Baker,

Larry Poertner, Duane Hall and William Kalmbach.

Jewelry is going organic! Italian designers are showing vegetables in their newest designs. Most often, golden vegetables are strung together to form long chains. Vegetables appliques also are popular on clothing.

An unusual jacket worn over shirt and pants is made of quilted material. It may be sleeveless or have cap sleeves.

VILLAGE BEAUTY SALON

LORETTA - CINDY - EULA
ARLENE - JANICE - JANET

107 N. MAIN PHONE 475-5421

Evenings By Appointment

OPEN MONDAY THRU SATURDAY
NOW OPEN MONDAYS

Bask in the dappled sophistication of new..



Subtle combinations of color on color
play across this nylon carpet in
never-before fashion effects and
"Sun King" is invitingly thick,
distinctively textured.
Light up your home with
"Sun King"!

\$9.95
per
sq. yd.

SALE ENDS
SEPT. 16

- ★ The fiber is nylon—the toughest, most wear-resistant fiber ever used in carpet.
- ★ The face yarns are spun to Lees exacting specifications.
- ★ The dyes are the best that money can buy.
- ★ Lees rigid quality control standards assure you that the broadloom that you will receive is as lush and beautiful in every way as the sample you see in the store!
- ★ Sun King is a special construction engineered for high performance in use. Two different thicknesses of yarns are used so the carpet will keep its textured look. The face yarns are packed in tightly to stand up underfoot and recover their shape after heavy traffic.
- ★ Sun King has been specially treated to reduce static electricity problems.

CALL
475-8621

MERKEL BROS.

36 MONTHS
TO PAY

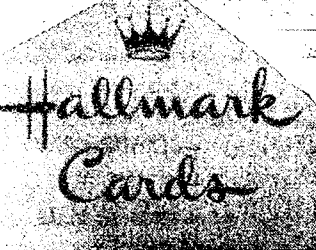


No other gift
says so much

When you really want to show your care, give a Keepsake diamond ring... world famous for its written guarantee of perfect quality, permanent registration and protection against diamond loss.

Keepsake
REGISTERED DIAMOND RINGS

WINANS
JEWELRY



CHELSEA CARD & GIFT SHOP

Our Hallmark every day cards have finally arrived. Come in and look over our beautiful new selection of cards. Our Gift Wraps and Party Goods are on the way, too. More of our new gift items have been arriving and are now on display. Please stop in and visit our new store.

Chelsea Card & Gift Shop
116 S. Main St. Phone 475-7501

Community Calendar



Past Matrons pot-luck, 6:30 p.m., Sept. 14 at the Temple. Husbands invited. Bring table service and passing dish. Social hour to follow.

Olive Lodge No. 156 family night, Tuesday, Sept. 19, pot-luck dinner, 8:30 p.m. Bring table service and dish to pass. Entertainment following.

Chelsea Social Service Office will be closed from Sept. 18 through Sept. 23. In case of emergency, call Mrs. David Colquhoun, 475-8553.

LaLeche League monthly meeting, Tuesday, Sept. 19, 8 p.m., at home of Pat Sherman, 429 Manor, Ann Arbor. Topic: "The Family and the Breastfed Baby". Everyone welcome. For transportation, call 475-2551.

Special attention to Chelsea Co-op Nursery School Alumni. The nursery school is now taking applications for the 1973-74 sessions. Anyone interested in registering their child, should contact Virginia Harvey, 475-2052. advx15

Pancake and Sausage Breakfast Sunday, Sept. 17, serving 8 a.m. to 1 p.m. at Masonic Temple in Chelsea. Sponsored by Olive Chapter No. 140 R.A.M. Public invited. \$1.35 per person. adv-x13

The first meeting of Older Adult Group that meets at Methodist church will be held Saturday, Sept. 16, 12 p.m. Bring dish to pass and table service. People of all faiths invited.

Freedom Ideal Homemakers Study Club, Friday, Sept. 15, 1:30 p.m. at the home of Mrs. Wilbert Grieb, 414 E. Washington.

Young Homemakers Family Picnic, Sunday, Sept. 17, 12:30 p.m., Park Lyndon. Bring own table service, one hot, one cold dish to pass. Drinks are furnished.

Chelsea Camera Club, Tuesday, Sept. 19, 7:30 p.m., Sylvan Township Hall. Guests welcome.

Senior Citizens September birthday party pot-luck, Korner House, Thursday, Sept. 21, 6:30 p.m. Committee for the party, Mrs. Marie Shayer, Verna Brown and Bernice Schneider.

Esther Chapter of Congregational church, Thursday, Sept. 21, 8 p.m. at church.

PNG Club of Chelsea Rebekah Lodge No. 130, Thursday, Sept. 14, at 7:30 p.m. at the home of Mrs. Nina Lehmann. Mrs. Velma Wolfe will co-hostess.

Chess-Nuts, every Friday, 8:30 p.m., St. Andrew's Episcopal church, 306 N. Division, Ann Arbor. Tournament and separate children's supervised chess playing, Saturday, Sept. 16. Registration, 9 a.m. Free coffee and punch. For more information, call Claudia, 971-6867.

Modern Mothers Child Study Club plan pot-luck dinner at home of Mrs. Max Plank, 6:30 p.m., Sept. 12. Mr. and Mrs. Marty and June Washburn to give a candle demonstration.

Rogers Corners Farm Bureau group, Friday, Sept. 8 at 8:30 p.m., home of Mr. and Mrs. Luther Schaible.

Rogers Corner Extension Study Group will meet at the home of Joyce Eiseaman, Tuesday, Sept. 19, 8 p.m.

Sunday school teacher's meeting, following church service at St. Barnabas. Nursery will open Sunday, Sept. 16.

St. Barnabas church ECW meeting, Thursday, Sept. 21, 7:45 p.m. Posters will be made for Oct. 12 luncheon.

Jerusalem Farm Bureau Thursday, Sept. 14, at 8:30 p.m. at the home of Mr. and Mrs. Walter Wolfgang.

Chelsea Rebekah Lodge No. 130 fall meetings start Tuesday, Sept. 19 at 7:30 p.m. Please note change in time.

No September meeting for Lima Center Study Group. Will see you at fall rally. Watch for letter.

American Legion and Auxiliary hospital equipment available by contacting Don O'Dell at 475-8249.

Chelsea Community Farm Bureau Thursday, Sept. 14 at 8 p.m. in the Sylvan Town Hall. Hosts will be Allen Broesamle and Everett Van Riper.

Ann Arbor Saturday Night Singles Club dance for single adults 25 years and over every Saturday from 9 p.m. to midnight at the YM-YWCA, 350 S. Fifth Ave., Ann Arbor. Mail - O - Tones Orchestra. For information, phone 663-8068.

Pap tests are free for all area women, Tuesday mornings, at St. Joseph Mercy Hospital, Ann Arbor. Call American Cancer Society office, 668-8857, for appointment.

Teens wishing to become volunteers at St. Joseph Mercy Hospital,



GRAND OPENING: Western Auto is observing a grand opening of their new store at 1178 S. Main St. in the Chelsea Lanes building. Present for an impressive ribbon-cutting ceremony Thursday morning, Sept. 7 to open the new facility, were many local dignitaries. Paul Mann, president of Chelsea State Bank, suitably attired in striped trousers and frock coat, officiated with the shears. (At least he was wearing the striped trousers.) Other prominent persons assisting at the event were, from left, Leon Meabon of Meabon's TV, Lloyd Heydlauff of Heyd-

lauff's, Sam Johnson of Gambles, Edwin Greenleaf of Chelsea Lanes, Mann, Mrs. and Clarence (Rip) Pendley, owners of the Western Auto store, Mrs. Earline Parker, long-time clerk at Western Auto, Postmaster Richard Schaules, and two Western Auto district executives whose names escaped us in the confusion of the occasion. Pendleys are extending their grand opening sale through this week in response to the fine reception they received in the beautiful new store.

+ AREA DEATHS +

Sylvester Parker

Dies Wednesday at Chelsea Community Hospital

Sylvester Parker, 15941 Gorton Rd., Waterloo, died Wednesday, Sept. 13 in Chelsea Community Hospital.

Mr. Parker was born Nov. 24, 1909 in Memphis, Tenn., and was married to Wilma Runciman on April 22, 1942 in Sparta, Wis. He is a veteran of W. W. II, where he was captured by Germans during the Battle of the Bulge, and held prisoner for three and one-half months. He also served four years in the 102nd Military Police Battalion for four years, prior to being sent to Germany.

In 1936 he began work at North American Rockwell, where he worked until ill health forced him to retire in 1964.

Surviving him are his widow, Wilma; three daughters, Mrs. Steven (Jean Marie) Easudes of Ann Arbor, Mrs. Robert (Susie Irene) Martin of Grass Lake, and Betty Lou Parker, at home and three grandchildren.

Funeral services will be held at the Staffan Funeral Home at 2 p.m., Saturday, Sept. 16. Burial will follow in Mt. Hope Cemetery, Waterloo.

Ann Arbor, should apply now for orientation classes Sept. 18-22, 7:30 p.m. Work permit, chest x-ray, doctor's and parent's permission required. Ph. 665-4141 for further details.

Inquiries regarding the Chelsea blood bank may be directed to Harold Jones in the event that Mrs. Dudley Holmes is unavailable, or to Mrs. Pauline McKenna, American Red Cross in Ann Arbor, 971-5300.

Michigan ranks a proud first in the nation's blueberry production. About half the crop is sold fresh. The balance is divided between canneries and freezing plants.

Robert O. Winans

Had Taught in Dundee School System for 27 Years

Robert O. Winans, 61, of 280 Outer Dr., Dundee, died Thursday, Sept. 7 at St. Joseph Mercy Hospital after a long illness. Funeral services were held Monday, Sept. 11 in the Buhl Funeral Home, Dundee. The Rev. Robert McCachran of the Dundee First United Presbyterian church officiated. Burial was in Oak Grove Cemetery.

Mr. Winans was born June 15, 1911 in Chelsea to Elmer and Cora Burkhardt Winans. He graduated from Chelsea High school and from Eastern Michigan University and was married to Marian Goodell on Oct. 16, 1936. Winans worked four years at Lamberville as a teacher and principal and taught for the Dundee Community Schools for 27 years.

Surviving him are his widow, Marian; his parents, Mr. and Mrs. Elmer Winans of Chelsea; two daughters, Mrs. Lawrence Liberty of Guam and Mrs. Donald Peters of Yellow Springs, O.; four brothers, Charles, David and George of Chelsea and John of Ann Arbor; two sisters, Mrs. Donald Oesthite of Ann Arbor and Mrs. Albert Park of Flint; and three grandchildren. Pallbearers for the funeral were Gerald Stucker, W. W. Lewis, Robert Foster, Don Labun, Maurice Howe and Dwight Durocher.

Memorials will be accepted for the Robert O. Winans Scholarship Fund of Dundee High school.

More on ham: Read the label on the ham you want to buy. It tells you if it is the shank or butt portion - the center slices have been removed. The butt half usually offers more meat in relation to the bone, but the shank half is easier to carve. The difference in price usually takes care of the slightly smaller amount of meat in the shank half.

Subscribe today to The Standard.

Mrs. Alfred Machnik

Former Chelsea Resident Dies at Livonia Hospital

Former Chelsea resident, Mrs. Alfred (Mary) Machnik, 853 Forest, Plymouth, formerly of 16376 Farnsworth Rd., died Wednesday, Sept. 6 at St. Mary's Hospital in Livonia.

Mrs. Machnik was born Aug. 23, 1896 in LaSalle, Ill., to Victor and Antonia Wechorchi Resch and married Alfred Machnik in Detroit. She remained in Detroit until January, 1941, when she moved to Chelsea. Mr. Machnik died March 14, 1961 and Mrs. Machnik went to make her home with her daughter in Plymouth.

Surviving her are two sons, Alfred, Jr., of Plymouth, and Arthur of Chelsea; two daughters, Mrs. Virginia Migda of Plymouth and Mrs. Delores Whitesall of Chelsea; 17 grandchildren, eight great-grandchildren, and several brothers and sisters.

Funeral services were held Saturday, Sept. 9 at 10 a.m. at the Clive H. Dickens officiated. Burial was in Oak Grove Cemetery.

Lynn D. Burch

Manchester Pharmacist Dies After Long Illness

Funeral services for Lynn D. Burch of Manchester were held Sunday at 2 p.m. at the Jentner Funeral Home. Mr. Burch owned and operated the Manchester Drugstore from 1949 until his retirement in 1969.

Mr. Burch, 72, died Thursday at St. Joseph Mercy Hospital following an extended illness. He was a member of Lodge No. 143, F&AM. Born June 18, 1900 in Manchester, he married Dorothy Schulwitz on Oct. 5, 1947. He was a 1922 graduate of the Detroit Institute of Technology and worked as a registered pharmacist in Detroit, Ecorse, and River Rouge before returning to Manchester.

Survivors include his widow, Dorothy; two sons, Lynn Robert and Merrick Daniel; one brother, Harold; two sisters, Mrs. Hazel Kennedy of Clearwater, Fla. and Mrs. Caroline Stockwell of St. Petersburg, Fla.; a granddaughter.

BIRTHS

A son, Randy William, to Mr. and Mrs. Gary Seitz, 687 S. Lima Center Rd., Monday, Sept. 4. Maternal grandparents are Mr. and Mrs. Web Warner of Chelsea and paternal grandparents are Mr. and Mrs. George Elkins of Chelsea.

A daughter, Sheri Lynn, Saturday, Sept. 2, to S-Sgt. and Mrs. David H. Priest, currently stationed at Minot AFB, N. D. Paternal grandparents are Mr. and Mrs. Ward Priest, 6700 Lombardy Dr.

Broken Arm Ruins Sunday School Perfect Attendance Record

Until last Sunday, Mrs. Herbert Paul, 152 E. Summit, held a perfect attendance record at St. Paul United Church of Christ for her 22nd consecutive year out of 29 years of perfect attendance. She was unable to attend Sunday school Sunday, Sept. 9, however, because of a broken arm.

Spike Dairy Farm Open House Slated

Spike's Green Acre Holstein Farm, 3280 Sharon Hollow Rd., Manchester, will hold a grand opening Thursday, Sept. 14 from 11 a.m. to 3 p.m. featuring an assortment of displays and refreshments. MSU Extension Specialists and

Scouting Information Available to Parents, Boys at School Night

The annual School Night for boys interested in scouting will be held Thursday, Sept. 21 at 7:30 p.m. at South school.

All cubmasters and denmothers of packs 415, 435, 445, and 455 are requested to attend.

Information on scouting activities and how to join the Scouts will be available.

Persons with questions should contact Charles Burgess at 475-8139.

representatives from construction equipment and service companies will be available to answer any questions.

Spike's is a modern dairy facility that includes such features as a cold enclosed housing for 200 cows, a central feed drive, a fully insulated common holding area, parlor, 16 units of double-8 herringbone, an automatic crowd gate and a heating system that utilizes heat from the milk cooler compressor. The open house is sponsored by the Washtenaw County Extension Service, construction, equipment and service suppliers, and the Spike family extends a cordial welcome to all to attend.

Injured in Auto Mishap

(Continued from page one) concussion, where she will remain until the middle of next week. The other three occupants of the car were uninjured.

FALL IS NEAR — Is Your Homework Done?



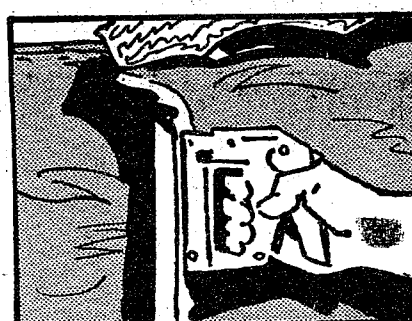
GUTTERS

HANDSOME BOX - STYLE 5" GIRTH - DO IT YOURSELF

10' Length, white\$3.98
10' Length, galvanized\$2.59

(DOWNSPOUTS SAME PRICE AS GUTTER)

★ ★ ★



INSULATION

16" and 24" Wide

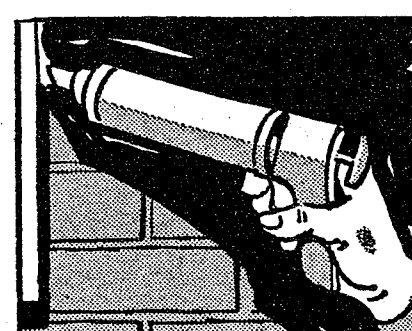
FOIL-BACK FIBERGLASS FOR TOP FUEL SAVINGS

2 3/4" Thick059 Sq. Ft.
4" Full-Wall075 Sq. Ft.

MICA-PELLETS

POUR-TYPE ATTIC FILL \$1.45
3 cu. ft. bag

★ ★ ★



CAULKING

MARINE TYPE

FOR LONGER LIFE

39¢

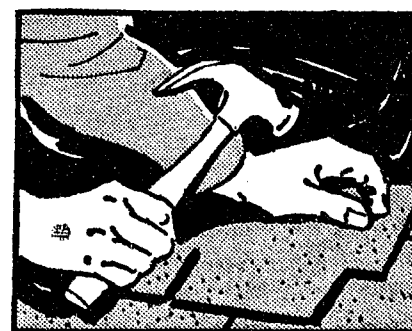
CARTRIDGE
Others from 29¢

CAULKING GUN98¢

DOOR & WINDOW SEAL

SELF-STIK FOAM RUBBER, 18 ft.99¢

★ ★ ★



ROOFING

HEAVY DUTY SEALTABS

WIND WON'T HARM A SEALTAB ROOF

—DUSKY OLIVE —FROSTED GRAY
—WHITE —CHAPEL BLUE
—BLACK —FROSTED BLUE
—FROSTED GREEN —FROSTED RED

\$10.95 PER SQUARE

★ ★ ★

ALL PRICES SHOWN ARE CASH-N-CARRY — FREE DELIVERY OVER \$100.00!

CHELSEA LUMBER

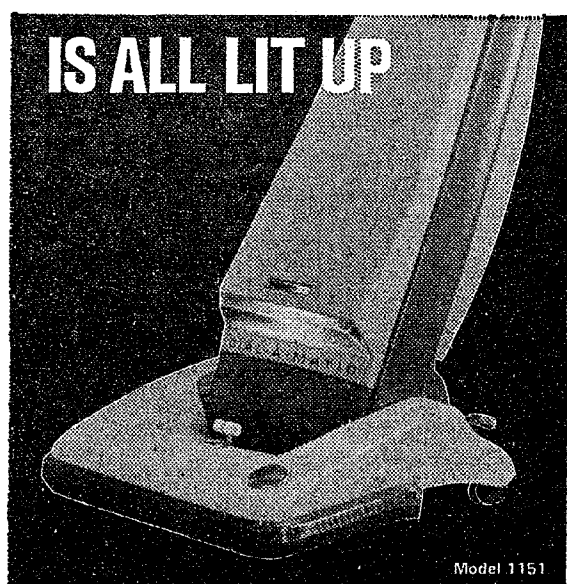
"Where the Home Begins"

MON. - FRI. 'TIL 5:30

SAT. 'TIL 3:30

THE NEW HOOVER DIAL-A-MATIC

IS ALL LIT UP



- NEW WIDE ANGLE HEADLIGHT
- NEW AUTOMATIC BAG SIGNAL LIGHT

With All Hoover's Famous Dial-A-Matic Features! Hoover's Power Dial lets you turn this superb upright into an extra powerful canister cleaner with a simple twist...and it's ready for attachments! Regulates suction power, too...for delicate cleaning - like draperies. On the floor, famous Hoover Triple-Action really deep cleans rugs and carpets...it beats, as it sweeps, as it cleans.

Instant Rug Adjustment - adapts to any carpet from indoor/outdoor to shag with a simple shift of the lever.

Wide Angle Headlight - makes cleaning easier in softly lit or shadowed areas.

Full Bag Signal Light - no worry about when to change the throw-away bag. Signal light is always in sight.

See this new DIAL-A-MATIC TODAY

\$129.95

Complete with attachments

HEYDLAUFF'S

113 N. Main St.

Phone 475-1221

GAMBLES

presents the uncommonly sleepable Young Married Set.



\$59.95

Regular sizes, King and Queen sizes slightly higher.

Sleep is what the Young Married Set mattress/box spring combination is all about. Relaxing, comfortable, luxurious sleep. Because Young Married Set features the unique Four Vital Value Inspring by Holland Matt, there's no humming, no side sway, no rolling together. Every contour of your body is gently yet firmly cushioned. Stop by soon and see the Young Married Set to discover sleep you've been dreaming about.

GAMBLES



Married Male Driver

Your A-O man will save you money on your car insurance. No surcharge or higher rate. See your A-O man — he's all out for you.

A. D. MAYER AGENCY, INC.

"Your Protection Is Our Business"

Phone 479-5061

115 Park St. Chelsea

Auto-Owners

INSURANCE COMPANY

Home office at Lansing, Michigan



1101 M-52

CHELSEA

OPEN
24
HOURS
A DAY
7 DAYS A WEEK

POLLY'S QUALITY WHITE
BREAD . 5 20-Oz. \$1
HOLSUM
KING SIZE BREAD loaf 39c
HOLSUM
ENGLISH MUFFINS . . . 3 pkgs. \$1

FROZEN CHICKEN, TURKEY OR SALISBURY STEAK

BANQUET DINNERS
3 11-Oz. \$1
Pkgs.

FLAVORITE FROZEN
ORANGE JUICE 4 12-Oz. \$1
Cans

U.S.D.A. CHOICE BEEF FULL SLICES
ROUND STEAK Lb. \$1

U.S.D.A. CHOICE BEEF
RIB STEAKS Lb. \$1

U.S.D.A. CHOICE BEEF STANDING
RIB ROAST 4-7 Rib Lb. \$1

U.S.D.A. CHOICE BEEF CHUCK
BONELESS ROAST . . . Lb. \$1

HYGRADE PORTER SLICED
BACON ENDS 3 Lb. \$1
Box

5 VARIETIES GOOD VALUE THIN
SLICED MEATS 3 3-Oz. \$1
Pkgs.

FRESH DRESSED
SPLIT BROILERS . . . lb. 39c

KINGSFORD BREADED
VEAL FRITTERS : 10-Ct. \$1.00
18-Oz.
KINGSFORD BREADED
PORK FRITTERS . 10-Ct. \$1.00
18-Oz.
KINGSFORD
Chuckwagon Steak 10-Ct. \$1.00
18-Oz.
KINGSFORD BREADED
DRUMSTICKS . . . 10-Ct. \$1.00
18-Oz.
ARMOUR STAR ALL MEAT SKINLESS
FRANKS 12-Oz. 69c
Pkg.

12-Oz. Pkg. Armour Star Miracle
SLICED BACON . . . 79c
FARMHOUSE
SLICED BACON . lb. 69c
HYGRADE PURE PORK ROLL
SAUSAGE lb. 69c
ECKRICH ALL MEAT FUN
FRANKS lb. 89c
ECKRICH SLICED
BOLOGNA lb. \$1.09

HYGRADE CHUNK
BOLOGNA . . . lb. 69c
LEAN FRESH SLICED
SIDE PORK . . . lb. 69c
LEAN TENDER MIXED
PORK CHOPS . . lb. 89c
ECKRICH
SMORGASPAC . lb. \$1.09
10-OZ. PKG. ECKRICH
SMOKY LINKS . . . 79c

DETERGENT
CHEER 49-Oz. 69c
Box
DISHWASHER
CASCADES 35-Oz. 49c
Box
HUNT'S SNACK PACK
PUDDINGS 4 Pak 48c
IMPERIAL SOFT
MARGARINE . . . 1-Lb. 39c
Carton
ASSORTED GENERAL MILLS
SNACKS 4 1/2-7 Oz. Pkgs. \$1
FABRIC SOFTENER
RAIN BARREL . . 48-Oz. \$1.09

THANK-YOU
PUDDINGS . . . 4 18-Oz. \$1
Pkgs.
ELF
ALUMINUM FOIL 4 25-Ft. \$1
Rolls
ELF RED SOUR PITTED
CHERRIES . . . 4 16-Oz. \$1
Cans
KLEENEX BOUTIQUE
BATH TISSUE . 4 2-Pak \$1
Rolls
LIBBY
TOMATO JUICE . 3 46-Oz. \$1
Cans
JUMBO
TERI TOWELS . . 3 Rolls \$1
ELF
SWEET PEAS . . 6 16-Oz. \$1
Cans
FRANCO AMERICAN
SPAGHETTI . . . 7 15-Oz. \$1
Cans

HUNT'S SLICED OR HALVES
PEACHES . . . 3 29-Oz. \$1
Cans
HUNT'S
MANWICH . . . 3 15 1/2-Oz. \$1
Cans
STOKELY
GATORADE . . . 3 32-Oz. \$1
Cans
SEASONED
RYE KRISP . . . 3 8 1/2-Oz. \$1
Pkgs.
RICHELIEU PIECES AND STEM
MUSHROOMS . . 3 4-Oz. \$1
Cans
VAN CAMP'S
PORK 'N BEANS 6 16-Oz. \$1
Cans
ELF
SAUERKRAUT . . 6 14-Oz. \$1
Cans
PACIFIC ISLE
PINEAPPLE . . . 7 Cans \$1

POLLY'S QUALITY
ICE CREAM 2 1/2 Gallon \$1
Cartons
SEALTEST
HALF 'N HALF . . . 39c SEALTEST
2% MILK . . . gal. 79c
RISDON
CHIP DIP pt. 45c

U.S.D.A. CHOICE BEEF
Boneless Round Steak lb. \$1.19
U.S.D.A. CHOICE BEEF
Sirloin Tip Steak . . . lb. \$1.49
U.S.D.A. CHOICE BEEF
Boneless Club Steak . lb. \$1.79
U.S.D.A. CHOICE BEEF BONELESS
Rolled Rump Roast . lb. \$1.39
U.S.D.A. CHOICE BEEF
Cube Steaks lb. \$1.49
U.S.D.A. CHOICE BEEF
Chuck Steak lb. 79c

GOLDEN RIPE CHIQUITA

BANANAS Lb. 12c

U. S. NO. 1 CRISP FENTON
APPLES . . . 3-Lb. 49c
Bag

SWEET AND JUICY BARTLETT
PEARS Lb. 29c

ACORN, BUTTERCUP OR BUTTERNUT
SQUASH Lb. 15c

SUNMAID SEEDLESS
RAISINS 2-Lb. 89c
Bag

SWEET CALIFORNIA
ORANGES 113 69c
Ct. Doz.

TENDER, PASCAL
CELERY Large 33c
Stalk

U. S. NO. 1 YELLOW
ONIONS . . . 3-Lb. 59c
Bag

SUNSWEET
PITTED PRUNES 12-Oz. 57c
Cans

WEIGHT WATCHERS
DRY MILK & COFFEE CREAMER . . . 40 99c
Ct.
WEIGHT WATCHERS
SUGAR SUBSTITUTE 102 Ct. 79c
WEIGHT WATCHERS
FROZEN LEMONADE 5 1/4 Oz. 19c
WEIGHT WATCHERS FROZEN
SOLE FISH LUNCHEON 8-Oz. 75c

WEIGHT WATCHERS
HADDOCK LUNCHEON . . . 8-Oz. 75c
WEIGHT WATCHERS
PERCH LUNCHEON 8-Oz. 75c
WEIGHT WATCHERS
CHICKEN CREOLE 12-Oz. \$1.59
WEIGHT WATCHERS
VEAL STUFFED PEPPER . . . 12-Oz. \$1.59

CLIP & SAVE
SAVE 18c WITH COUPON
CHEER 49-Oz. 69c
Box
With \$3.00 purchase
EXPIRES SEPT. 16, 1972
LIMIT 1

CLIP & SAVE
SAVE 18c WITH COUPON
CASCADES 35-Oz. 49c
Pkg.
With \$3.00 purchase
EXPIRES SEPT. 16, 1972
LIMIT 1

CLIP & SAVE
SAVE 15c WITH COUPON
HUNT'S SNACK PACK
PUDDINGS 4 pak 48c
With \$3.00 purchase
EXPIRES SEPT. 16, 1972
LIMIT 1

CLIP & SAVE
SAVE 10c WITH COUPON
IMPERIAL SOFT
MARGARINE 1-Lb. 39c
Crtn.
With \$3.00 purchase
EXPIRES SEPT. 16, 1972
LIMIT 1

CLIP & SAVE
SAVE 47c WITH COUPON
GENERAL MILLS
SNACKS 3 pkgs. \$1.00
With \$3.00 purchase
Lesser amounts regular price
EXPIRES SEPT. 16, 1972
LIMIT 3

CLIP & SAVE
SAVE 30c WITH COUPON
RAINBARREL 48-Oz. \$1.09
Pkg.
With \$3.00 purchase
EXPIRES SEPT. 16, 1972
LIMIT 1

POLY-VI-SOL **POLY-VI-SOL**

Reg. \$3.99
100's

\$2.66

SUDDEN BEAUTY HAIR SPRAY
12.5 Oz.
69c

CHELSEA DRUG STORE GOES DISCOUNT

To give the people of Chelsea Continued discount prices on Health and Beauty Aids and Vitamins



JOHN FREDERICKS - Reg. \$1.09

AMPLON LADIES PANTY HOSE

From Kayser Roth, 8 shades to select from. Choice of two sizes that will fit all. 100% Amplon Nylon. The fit that won't quit.

2 pr. 99c

Alka-Seltzer
CONTENTS 25 TABLETS

ALKA - SELTZER TABLETS

Reg. 79c Value 25's

COUPON - With This Coupon

49c

Limit 1. Adults Only. Expires in 10 Days.

Wella Balsam
CONDITIONER

Regular or Extra Dry

\$1.88

Limit 1. Adults only. Expires in 10 Days.

PEARL DROPS POLISH

Reg. \$1.09. 1.5 oz. size

69c

With This Coupon
Limit 1. Adults Only. Expires in 10 Days.

TAME CREME RINSE

16-Oz. REG. WITH LEMON, BODY, or OILY

\$1.19

With This Coupon
Limit 1. Adults Only. Expires in 10 Days.

EFFERDENT TABLETS

96's

\$1.69

With This Coupon
Limit 1. Adults Only. Expires in 10 Days.

PROTEIN 29 HAIR GROOM

With This Coupon

\$1.39

Limit 1. Adults Only. Expires in 10 Days.

SOFT & DRI DEODORANT

Reg. \$1.35/\$1.20 Value. 5-Oz. Can

69c

Scented or Unscented
Limit 1. Adults Only. Expires in 10 Days.

BROMO-SELTZER

9-Oz.

\$1.49

With This Coupon
Limit 1. Adults Only. Expires in 10 Days.

VASELINE INTENSIVE CARE LOTION
10 Oz.

89c

COUPON - 100's

TYLENOL

Reg. \$2.85 With Coupon

\$1.99

SUSPENSION Maalox

\$1.09

With Coupon \$1.19 Additional

FLASHCUBES
TOM SWIFT FLASHES

79c

DRISTAN
DECONGESTANT TABLETS

Reg. \$1.49

Sale \$1.11



WE ARE REGISTERED TO FILL ALL INSURANCE, HOSPITAL AND UNION PRESCRIPTIONS!

THE GOOD SOUND EVEREADY Transistor Batteries

Reg. 2 for \$1.58

TRANSISTOR BATTERIES

2 Pack. Only **88c**

BIC BALL POINT PENS

Reg. 19c Each VALUE

8c ea.

With This Coupon
Limit 8. Expires in 10 Days.

COUPON - Reg. 29c Value - LEPAGES

GELLOPHANE TAPE

With Dispenser

8c

With This Coupon
Limit 1. Expires in 10 Days.

J & J COTTON BALLS

Reg. 89c Value - 130's

57c

With This Coupon
Limit 1. Adults Only. Expires in 10 Days.

FASTEETH
DENTURE ADHESIVE POWDER

87c

With This Coupon

COUPON - Reg. \$1.09 Value - 70's J&J

BAND-AID SHEER STRIPS

With This Coupon

69c

Limit 1. Adults Only. Expires in 10 Days.

BACK TO SCHOOL VITAMIN SALE

MILES - 100's ONE - A - DAY

Reg. \$2.98 Multiple Vitamins

\$1.79

MILES - 100's ONE - A - DAY

Reg. \$3.39 With Iron

\$1.99

FLINTSTONES MULTIPLE VITAMINS

60's Plus 30 Free

Reg. \$2.29

\$1.39

FLINTSTONES VITAMINS WITH IRON

60's Plus 30 Free

Reg. \$2.59

\$1.59

COUPON - TONI HOME PERMANENT

With This Coupon

\$1.19

Limit 1. Adults Only. Expires in 10 Days.

COUPON - Reg. \$1.39 Value - Large

CLEARASIL for ACNE

With This Coupon

89c

Limit 1. Adults Only. Expires in 10 Days.

National Brand Vitamins

Reg. \$6.95 Therapeutic VITAMINS 100's

\$2.88

NATIONAL 200 I.V. VITAMIN E 100's

\$3.19

NATIONAL 400 I.V. VITAMIN E 100's

\$4.88

NATIONAL BRAND VITAMIN C 250 Mg. 100's

69c

NATIONAL BRAND VITAMIN C 500 Mg. 100's

99c

FREE - FREE WITH THIS COUPON

Reg. 39c Value - 1 1/4 Grain - 36 Count

ORANGE FLAVORED CHILDREN'S ASPIRIN FREE!

Limit 1. Adults Only. Expires in 10 Days.

Shop Our Total Drug Store for Complete Savings in Every Department. See The Latest in Fall Cosmetics Ideas Now in Stock at Our Cosmetic Counter.

ONE-MINUTE
SPORTS QUIZ

1. For whom does Jack Mildren play football?
2. Who is Luis Melendez?
3. For whom does Jim Plunkett play?
4. Who won the recent PGA tourney?
5. When does regular season play in the NFL begin?

(Answers on page 13)

A good joke is heard far and wide and for many years.

BIBLE VERSE

"Bear ye one another's burdens, and so fulfil the law of Christ."

1. Who was the author of this advice?
2. To whom was he writing at the time?
3. How can one obey the command?
4. Where may these words be found?

(Answers on page 13)

Life should not be all work; everyone is entitled to some recreation and amusement.

VILLAGE TAXES
ARE DUE and PAYABLE

At the
CHELSEA MUNICIPAL BUILDING
104 E. Middle St., Chelsea, Mich.

DEADLINE: WEDNESDAY, SEPT. 20, 1972
After Sept. 20, tax is transferred to the County Treasurer for collection.

**THERE WILL BE NO EXTENSION
OF THIS DEADLINE DATE!**

Hours: 9 a.m.-5 p.m. Monday thru Friday

WALLACE WOOD
CHELSEA VILLAGE TREASURER

STEERING WHEEL
VIBRATIONGOT YOU
BUGGED?

With our new Amermap tire tuning and wheel balancing equipment your wheel vibration bugs are gone for good. Tire tread imperfections, the common cause of vibration, are "tuned" giving you a perfectly round tire.

The difference in the way your car drives and rides will truly amaze you. And because the wheels are perfectly round and balanced your tires will last longer.

Drive in safety for a smooth, vibration-free ride and longer tire life.

GOULD'S ARCO

Phone 426-8825

2940 BAKER RD.

DEXTER

INVITATIONS or
ANNOUNCEMENTS...

Let us provide you with the very finest printed or engraved invitations and announcements. Make certain that your wedding stationery is of top quality and conforms to correct social requirements. We can advise you on these important details.

THE CHELSEA STANDARD
Commercial Printing Department

Turner Heading Home as
Winter Approaches in North

Dear Readers:

I have traveled many miles and visited many interesting places since my last report. I visited more of my friends and did some more fishing, took a run to historical Barkersville, 50 miles east of the 97 Highway, known as the Caribou route. The 97 Highway runs from the Alaska Highway at Dawson Creek, British Columbia, south to connect with the trans-Canadian highway.

This part of British Columbia was first settled in the 1860's when Billy Barker struck a rich gold mine in 1862 and the town of Barkersville grew up around this claim. Barkersville was quite a city a few years after the gold strike and many a tale is still told of the rip-roaring days that followed.

Barkersville was a forerunner of the strike at Dawson City, Yukon in 1898 of which I have previously written. I recommend anyone traveling in that area to take time to see this historical spot. The famed Fran Doucy actors and actresses play a role at the old Theatre Royal that is a must for anyone visiting Barkersville. The \$1.50 for the ticket to the show is more than worth the price.

From the Caribou area, I traveled to the Jasper and Banff National Park area. This area is beautiful. Snow is forming on the higher peaks and I saw a flock of geese going south the other day which reminded me that the summer has slipped away and winter is just around the corner here in the higher elevations.

It's a special and beautiful time of year here in the Canadian Rockies. The bull elk are rubbing the velvet from their antlers and screaming their defiance to other bulls which echoes throughout the woods here at Whistler's Campground at Jasper Park. A heavy frost last night put my feet in motion toward home.

Of course I can't leave the north without stopping to see old friends Don and Dennis Cooper at Deborgia, Mont. I am sure most of you reading this article have heard of Don Cooper, either from attending the Chelsea Kiwanis Club's travel and adventure series or on the George Perrot show on Channel 4.

On Don's last appearance in Chelsea, he mentioned his son, who was then only two months old, Matthew Wade Cooper. I thought perhaps the people of the Chelsea area would like to see this small bundle of "Furry," so see pictures and meet the new member of the Cooper family. I think it's safe to say he's a chip off the old block.

I must be running along now. I will probably be talking to some of you in Chelsea by the time this article is printed. Thanks to The Standard for printing the articles I sent back. Hope the readers have gathered something from them.

Your wandering reporter,
Don Turner.

McCLELLAN SELECTED

The Senate has formally elected Sen. John L. McClellan (D-Ark) as chairman of the Appropriations Committee to fill the vacancy left by the death of Sen. Allen J. Eiler (D-La.).



BEAUTY SPOT: Athabasca Falls is one of the many beauty spots on the Banff-Jasper Highway in the Canadian Rockies.

Child, Family Service Agency
Offers Help in Emergencies

The Child and Family Service of Washtenaw county, another of the organizations helped by the local Community Chest, is an association that offers varied services to the people of Washtenaw county. The main areas of service are adoptions, problem pregnancies, foster care, counseling and a homemaker service.

While the Child and Family Services handles all children up for adoption, they specialize in placing the "special" children. These "special" children; children of mixed races, the handicapped, mildly retarded children and older children, are obtained from various sources. Oftentimes a mother-to-be will come for problem pregnancy counseling and subsequently bind her child over to the agency to be placed for adoption. The Michigan Adoption Exchange Referral, a state registered organization, also provides children, as well as the court. Last year alone, 249 adoption inquiries were received and reviewed by the agency.

Counseling is also available for problem pregnancies; usually unwed mothers who wish to explore the alternatives open to them. These women are sometimes recommended by others; doctors, clergy, friends, the court; but often times they contact the service on their own initiative. 42 cases were handled last year, and the girls were given information on adoptions, homes for unwed mothers, the right to keep the child, abortion and any other alternatives open to them.

Temporary foster care service is also available. Foster children are sometimes bound over by the court, some are pre-adoptive and others are voluntary placements, mostly temporary. 60 such cases were handled last year.

Counseling for all types of problems is available to people referred by their doctor, clergyman, the police, the courts, schools, attorneys and for the majority who just walk in off the street. Trained social workers are available for any need.

The homemaker service consists of trained individuals who are placed in homes during times of crisis or emergencies and who are responsible for caring for any children, cooking and other services.

ices a wife and mother would usually perform. They are not nurses, but trained, down-to-earth women who can take over a household while the mother is hospitalized, for example.

An extension of the homemaker's service is work with the elderly. These women visit the homes of older people two or three times weekly for short periods and help them with their particular needs. They attempt to keep the elderly healthy, happy and self-sufficient, keeping them out of nursing homes and allowing them to remain in their own homes with a minimum of problems.

A new innovation this year is a worker from the service who works in connection with legal aid on scheduled days. She counsels the people coming to legal aid if their problem is judged to be more social than legal. This program has proven to be highly successful, for it gets the people at the time and place where they need help. Legal aid would formally refer people to Child and Family Services but found that people were reluctant to carry through on the advice. With the social worker right there, this problem is alleviated.

The Child and Family Service at 2390 Huron Parkway, and in Ypsilanti at 118 S. Washington, has an office in both Ann Arbor. There are 16 branches scattered throughout Michigan, with the main office in Farmington.

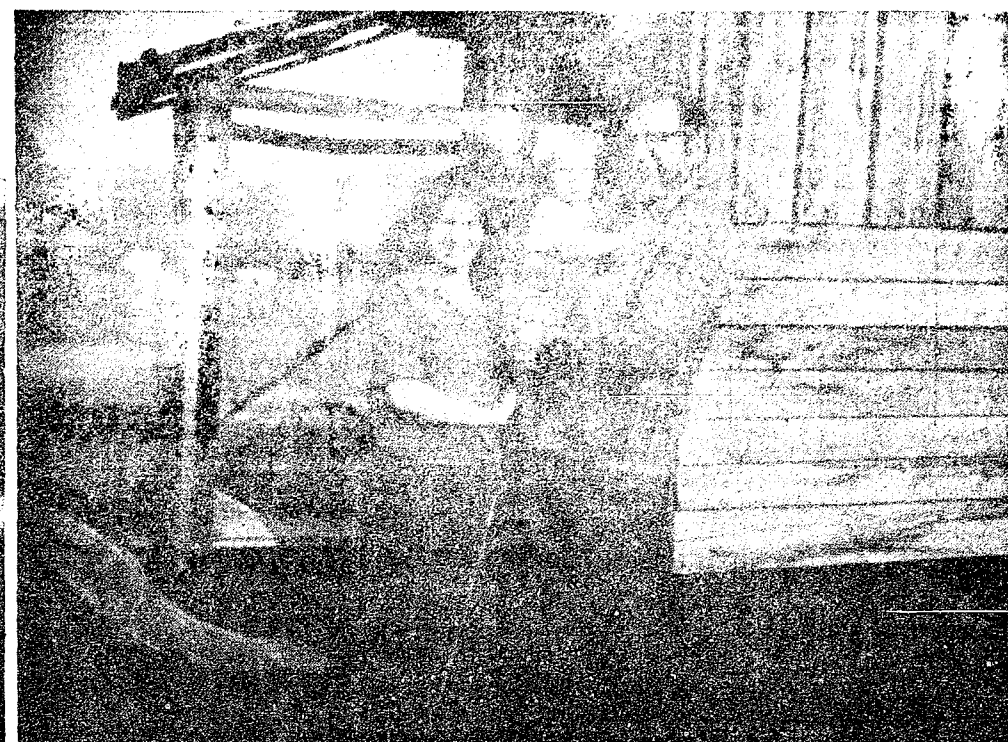
Hours for the service are 8:30 a.m. to 5 p.m. on Tuesdays through Fridays and 8:30 a.m. to 9 p.m. on Mondays.

PROUD PAPA

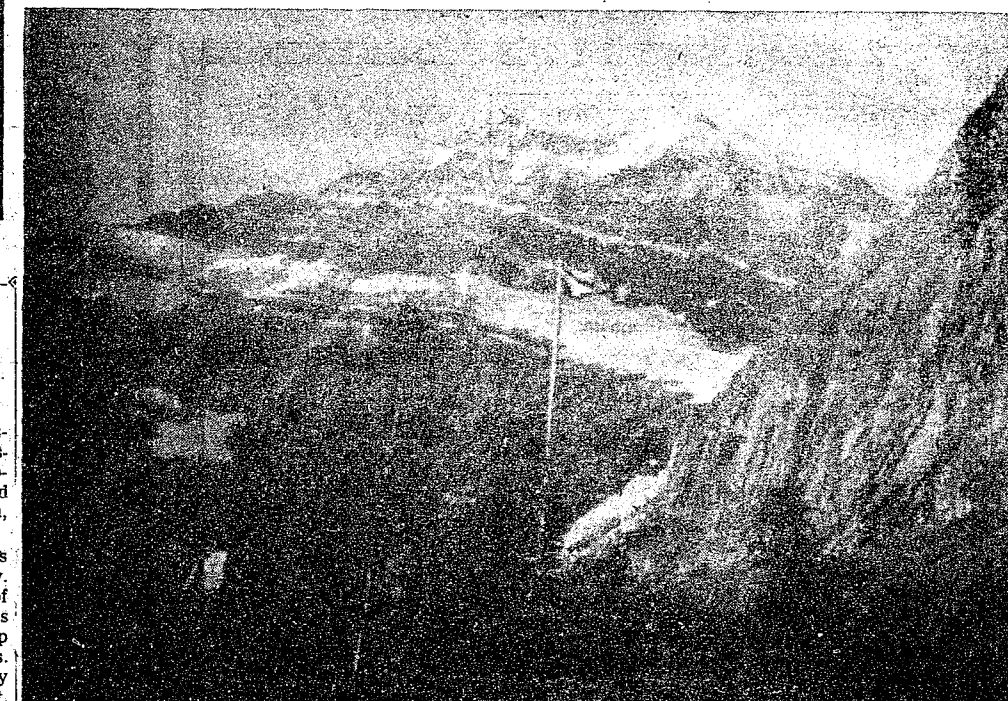
Tampa—Determined to be present when his wife gave birth to their child, James Koski handcuffed himself to his wife. Police were summoned to remove the handcuffs but Koski was allowed to stand by and watch the delivery of his daughter.

FORGETS ANNIVERSARY

Gillingham, England — Hoping to remind her husband of their 30th wedding anniversary, Mrs. Jock Cowie ran an ad in the paper congratulating him for marrying her 30 years ago. He forgot — and missed seeing the ad in the paper.



LAP OF LUXURY? Mr. and Mrs. Don Cooper and son Matthew of Deborgia, Montana, pose for the camera in front of their "new" (Model T) mobile home.



MT. EDITH CAVILL, in the Jasper area, was named after a nurse who lost her life when shot as a spy by the Germans in World War I. A monument and a plaque is erected at the site in her honor. Angel Glacier, so named because it resembles the outstretched wings of an angel, can be seen in the center of the picture.

USO PROBE

Washington, D.C.—The Pentagon has ordered a worldwide investigation of activities due to alleged fraudulent activities by some USO officials in Vietnam.



PROBLEMS??

That's why we're here!

Trust us. We're the guys who know the inside story... and our shop is equipped for any car emergency. Service is our specialty. So bring your problems to us.

**TIRES - BATTERIES - ELECTRONIC TUNE-UPS
BRAKE SERVICE - WHEEL ALIGNMENT - WRECKER SERVICE**

Fred's Standard Service

889 S. Main, Chelsea

Phone 475-2804

**Your house is
the biggest
investment
you're ever
likely to make.
When it comes
to protecting it
with paint,
don't settle for
anything less
than...**

**Dutch Boy
Latex
House Paint**

Pure acrylic latex to stay white longer, keep colors brighter, stay good-looking longer. Get more years to the gallon with Dutch Boy Latex House Paint.



**MERKEL
BROS.**

Open Mon. & Fri. Til 9
Phone Chelsea 475-8621

VILLAGE OF CHELSEA
Notice of
PUBLIC HEARING

A public hearing will be held Tuesday, September 12, 1972 in the Chelsea Village Council Chambers, 104 East Middle Street at 7:30 p.m., to consider the request of R. W. Spaulding and Lloyd Bridges Chevrolet, Inc. to rezone a parcel of land as herein described from R-1 Residential to Commercial or Industrial.

LOTS 1, 2, 3, 4 & 89 EXC BEG AT SE COR OF LOT 4 THE SWLY 53.46 FT. IN S LINE OF LOT 4, TH DEFL 97 DEG 52' RIGHT 124.08 FT THC DEFL 82 DEG 08' RIGHT 70.74 FT THC S IN W LINE OF MAIN ST 128.88 FT TO PL OF BEG BLOCK 6 ORIGINAL PLAT (This property is located at 106 West North Street).

In conforming to applicable laws, all parties including all owners of property within three hundred (300) feet of the premises described above are hereby notified.

**THE CHELSEA
VILLAGE PLANNING COMMISSION**

VILLAGE OF CHELSEA
Notice of
PUBLIC HEARING

A public hearing will be held Tuesday, September 12, 1972 in the Chelsea Village Council Chambers, 104 East Middle Street at 7:30 p.m., to consider the request of Edmond and Betty Green to rezone a parcel of land as herein described from R-3 Multiple Family to Commercial.

COM AT PT ON S LINE OF LOT 17 BLK 2 ORIGINAL PLAT VILLAGE OF CHELSEA 3 1/2 RDS WLY FROM SE COR LOT 18, IN SAID BLK, RUNNING TH NLY PARALLEL WITH E LINE LOT 18, 6 RDS AND 12 FT, TH E PARALLEL WITH N LINE OF MIDDLE ST, 39 1/2 T, TH NLY PARALLEL WITH E LINE LOT 33 TO N LINE SAID LOT 33, TH WLY ALONG N LINE LOTS 33, 34, 35 TO NW COR OF SAID LOT 35, TH SLY ALONG W LINE SAID LOTS 35 & 16 TO SW COR LOT 16, TH ELY ALONG S LINE LOTS 16 AND 17 TO PL OF BEG, EXC THE N 35 FT IN WIDTH THEREOF, BEING PARTS OF LOTS 17, 18 AND 33, ALL OF LOTS 16, 34, 35 BLK 2 ORIGINAL PLAT HEREBY EXC AND RESERVING FROM ABOVE DESC PREMISES THE FOLLOWING COM AT PT ON S LINE LOT 17 SAID BLK 2 ORIGINAL PLAT 3 1/2 RDS WLY FROM SE COR LOT 18 IN SAID BLK, RUNNING THE NLY PARALLEL WITH E LINE OF LOT 18, 7 RDS, 2 1/2 FT, TH NWLY IN A STRAIGHT LINE TO NW COR LOT 16 IN SAID BLK, TH S ALONG W LINE SAID LOT 16 TO SW COR THEREOF, TH E ALONG S LINE OF LOTS 16 AND 17 TO PL OF BEG, BLOCK 2 ORIGINAL PLAT, VILLAGE OF CHELSEA, MICHIGAN (This property is located at 128 Jackson St., Village of Chelsea).

In conforming to applicable laws, all parties including all owners of property within three hundred (300) feet of the premises described above are hereby notified.

**THE CHELSEA
VILLAGE PLANNING COMMISSION**

BOWLING NEWS

Tri-City Mixed League

Standings as of Sept. 8

	W	L
Appliance Co.	4	0
& Lyerla	4	0
Cleaners	3	1
Market	3	1
es & Service	3	1
ham & Bollinger	3	1
Mobil	2	2
Fletcher	2	2
Koch & Associates	1	3
Inn	1	3
Birely, & Warren	1	3
Smith Pallet Co.	1	3
& Scholz	0	4
e Buick & Olds	0	4

Senior House League

Standings as of Sept. 11

	W	L
Barber Shop	4	0
Ferguson	4	0
V Lounge	3	1
Arco	3	1
Tavern	3	1
quad	3	1
Center	3	1
Grinding	3	1
Taxidermy	3	1
ler's Builders	3	1
ine Race Club	3	1
Market	3	1
der's Grocery	3	1
Bridges Chevrolet	3	1
a Cleaners	3	1
ne	3	1
der's Trucking	3	1
series: M. Poertner, 619; M. 617; N. Ernst, 606; A. 619.		
series: J. Lyerla, 572; G. 584; R. Spaulding, 583; 578; J. Harook, 596; N. 583.		
series: M. Poertner, 248; A. 225; 228; M. Sweet, 242.		

Verse Answers

Paul, the Apostle.
The Christians living in Gala-
thy by being forgiving and help-
ing one's fellowmen.
Galatians 6:2.

Chelsea Suburban

Standings as of Sept. 8

	W	L
Chelsea Lanes	4	0
Dairy Queen Braizer	4	0
Dana Corp.	3	1
Waterloo Garage	3	1
Dancer's	3	1
State Farm	2	2
Pittsfield Plastics	2	2
Fletcher's Foot Mobil	1	3
Artex Roll-Ons	1	3
Chelsea State Bank	1	3
Chelsea Drug Store	0	4
Frisinger Realty	0	4

Nite Owl League

Standings as of Sept. 11

	W	L
Cavanaugh Lake Store	4	0
Steele's Heating	4	0
Dault-Levan	4	0
Pump & Pantry	4	0
Kirby Co.	4	0
Spoliers	4	0
McCalla Mobile Feeds	3	1
Chelsea Finance	3	1
Team No. 14	3	1
Heller Electric	3	1
A. M. Corp.	3	1
Jack & Son Barbers	3	1
Mark IV	3	1
Ted's Standard	3	1
Foster's Men's Wear	3	1
Smith's Service	3	1
Wahl's Arco Sparks	3	1
Team No. 18	3	1

500 series: V. Reynolds, 549; G. Miller, 547; J. Parks, 547; J. Dault, 541; T. Steele, 534; L. Wack-
enhut, 531; B. McGibney, 526;
E. Green, 524; E. Buku, 522; W.
Smith, 519; G. Green, 514; G.
Rentschler, 513; D. Roehm, 510;
G. Reichmiller, 509; W. Muier, 504;
T. Dault, 502.
200 games: T. Steele, 206; L.
Heller, 207; J. Dault, 203; R. Fos-
ter, 202; H. McCalla, 201.

Junior House League

Standings as of Sept. 7

	W	L
Chelsea Lanes	7	0
3-D Sales & Service	7	0
Gambles	7	0
Jiffy Mix	7	0
Dana No. 3	7	0
Michigan Bell	7	0
Smith's AAA Service	5	2
Wolverine No. 1	5	2
Inverness Inn	2	5
Boyer Automotive	2	5
Washtenaw Engineering	0	7
Ann Arbor Bldg. Supply	0	7
Wolverine No. 2	0	7
Rockwell Standard	0	7
Cavanaugh Lake Store	0	7
Frisinger Realty Co.	0	7

Chelsea Women's Bowling Club

Standings as of Sept. 6

	W	L
Parish's Cleaners	4	0
Chelsea Milling	3	1
Chelsea Lanes	3	1
Jiffy Mixes	3	1
Bridges Chevrolet	3	1
Wolverine Bar	3	1
Norris Electric	3	1
Team No. 16	3	1
Ben's Arco	3	1
Schneider's Grocery	3	1
Alley Cats	3	1
Washtenaw Engr. Co.	3	1
Heydlauff's	3	1
Chelsea Grinding	3	1
N. American Rockwell	3	1
Jiffy Market	3	1

Leisure Time League

Standings as of Sept. 7

	W	L
Misfits	4	0
Rug Rats	4	0
Team No. 4	3	1
Team No. 2	3	1
Three Stooges	3	1
Team No. 3	3	1
Team No. 10	3	1
Team No. 1	3	1
Team No. 8	3	1
Team No. 7	3	1

Over 140 games: B. Mull, 145; Ann Arbor Centerless, 140.

SPORTS CORNER

BORN IN PORTSMOUTH, N. H. AND NOW A RESIDENT OF CONCORD... JANE BLALOCK



ATTENDED ROLLINS COLLEGE, WAS 'ROOKIE OF THE YEAR' AFTER TURNING PRO IN 1969.

SHE WAS NEW HAMPSHIRE STATE AMATEUR CHAMPION 1965-1968, NEW ENGLAND CHAMPION IN 1968.

Quarterly Vehicle Highway

Payments Up From Last Year's

Second quarter Motor Vehicle Highway Fund collections are being distributed to Michigan counties, cities, and villages, the State Highway Commission reported.

State Highway Director Henrik E. Stafseth said net receipts of the Highway Fund during April, May, and June amounted to \$99,689,514, an increase of \$8,424,019, or 9.2 percent, over the same period of 1971.

Washtenaw county's share totaled \$874,436, while cities and villages in the county received \$467,961. A breakdown by cities and villages is as follows: Chelsea, \$12,783; Dexter, \$8,464; Saline, \$13,460; Manchester, \$7,165; Ypsilanti, \$79,378; Ann Arbor, \$33,713; and Milan \$14,490.

Chelsea's share is up from the 1971 second quarter figure of \$11,720. Dexter's share is up from \$19,939,903.

400 series: K. Haywood, 415; C. McDaniels, 402; D. Dault, 443; M. Usher, 451; G. Wheaton, 466; L. Haller, 417; M. Miller, 402; B. Mull, 400.

Chelsea Lanes Mixed

Standings as of Sept. 8

	W	L
The Gasers	7	0
Bollinger's Sanitation	5	2
Dough's Painting	5	2
Jarvis-Barnhill	5	2
Barkley-Hoffman	5	2
The Pub	5	2
Jiffy Market	5	2
IYO No. 16	4	3
Chelsea Standard	3	4
Harden-Eastman	2	5
Wheeling-Steinaway	2	5
Verwey-Henderson	2	5
Meabon's TV	2	5
Terry-Dan	2	5
Chelsea Lanes	2	5
Ann Arbor Centerless	0	7

Farm Bureau Women To Host District Meet

Ecology will be one of several topics on the agenda of the Farm Bureau Women's fall district meeting scheduled for Sept. 28 at the Pittsfield Grange Hall near Ann Arbor. According to Mrs. Joseph Lutchka, chairman of the Washtenaw County Farm Bureau Women's Committee, the meeting will begin at 10 a.m. with coffee and registration set for 8:30.

Mrs. Lutchka reports that the district meet is open to non-Farm Bureau Women as well as to all Farm Bureau Women and their friends. Women will be attending from Livingston, Monroe, Oakland, Washtenaw and Wayne counties.

Featured on the morning program will be the film, "The Road to Delano," which tells of the strong opposition of farm workers to the tactics of Cesar Chavez and the United Farm Workers Organizing Committee. Present to answer questions regarding the film will be Andrew Jackson of Howell, who serves as a director on the Michigan Farm Bureau Board.

Guest speaker on the afternoon agenda is Dr. Marguerite Leng, from the Agricultural Research on Ecology Department of Dow Chemical Co.

Also on the program will be installation of officers with Mrs. Nancy Geiger of South Lyon, and Mrs. Ollis Hudson of Fowlerville installed as district chairman and the Farm Bureau Women in this five-county area.

On the lighter side will be a crafts display and style review of items made by women selected as winners in each of their county contests, and a demonstration on using pine cones and other materials to make decorative articles for the home. Each of the county women's committees will give a brief report of their various activities and projects during the year.

A noon luncheon, at a cost of \$1.75, will be served at the Pittsfield Hall, which is located at 3337 Ann Arbor-Saline Rd., women planning to attend should send or call their reservations to Mrs. Erwin Frederick, 4410 S. Wagner Rd., Ann Arbor 48103, phone 665-9082, before Sept. 21.

Sports Quiz Answers

1. The Baltimore Colts.
2. St. Louis Cardinal outfielder.
3. The New England Patriots.
4. Gary Player.
5. September 17th.

Every child should have his chores whether the family be rich or poor.

NOW OPEN for Business
WE REPAIR AND REPLACE:

- ★ STORE FRONTS
- ★ FURNITURE TOPS
- ★ SHOWER DOORS
- ★ THERMOPANES
- ★ AUTO GLASS - Including Windshields
- ★ MIRRORS
- ★ PATIO DOORS
- ★ TUB ENCLOSURES

Free Pick-up and delivery on auto work.
Storm Door & Window Reglazing & Screens
COMMERCIAL BUILDINGS OR RESIDENTIAL
PROMPT SERVICE REASONABLE PRICES
CALL OR STOP IN
CHELSEA GLASS WORKS
WORKMANSHIP AND MATERIALS FULLY GUARANTEED.
PHONE (313) 475-8667 - OPEN 8 a.m. to 5 p.m.
140 WEST MIDDLE ST. CHELSEA, MICH.

LaFontaine Construction & Development Corp.
GENERAL CONTRACTORS
Will Build To Your Specifications
CUSTOM BUILDER - Residential, Commercial, Industrial
COMPLETE HOME MODERNIZATION SPECIALISTS

- ★ Additions
- ★ Family Rooms
- ★ Attics
- ★ Rec. Rooms
- ★ Roofing
- ★ Siding
- ★ Cement Work
- ★ Kitchens
- ★ Patios

FREE ESTIMATES
LICENSED BUILDERS
PHONE 475-1389
525 N. MAIN, CHELSEA

Visit the
MARK IV LOUNGE
Now Serving
Your Favorite Beverages
Lunches Starting at 11 a.m.
LOCATION: 1180 M-52, CHELSEA
AT CHELSEA LANES

EXPERT BUMPING and PAINTING
FREE ESTIMATES - ALL MAKES
LLOYD BRIDGES CHEVROLET
475-1373 CHELSEA, MICH.

FALL TERM STARTS SEPTEMBER 25

- ★ GRADUATES ARE PLACED Job Opportunities
- ★ STUDENT LOANS Many Work Part Time
- ★ We FILE FORMS FOR TRAINING OF VETERANS
- ★ EXECUTIVE SECRETARIAL SCIENCE! ACCOUNTING! MANAGEMENT MAJORS; BUSINESS SUBJECTS.
- ★ REQUEST CATALOG. VISIT J.B.U. I WILL COME TO YOUR HOME. NO OBLIGATION.

STEPHEN FAIRBANKS, SECRETARY

JACKSON BUSINESS UNIVERSITY
234 S. Mechanical Street 789-6123

WANTED
Couples for
Sunday Night Mixed League
Bowls Every Other Sunday Night.
18 ASTROLINE LANES - BILLIARDS
CHELSEA LANES, Inc.
PHONE 475-8141
1189 M-52 CHELSEA

Let our final clearance prices put more joy into your
Summer of '72

CHRYSLER NEWPORT ROYAL
FINAL CLEARANCE \$2000

PLYMOUTH FURY FINAL CLEARANCE \$2000

PLYMOUTH DUSTER FINAL CLEARANCE \$2000

Joy is knowing you did the right thing in The Summer of '72

AUTHORIZED DEALERS **CHRYSLER MOTORS CORPORATION**
Final clearance joy to you from...
VILLAGE MOTOR SALES, INC.
1185 MANCHESTER ROAD CHELSEA, MICHIGAN

SCHOOL LUNCH MENU

Week of Sept. 18-22

Monday, Sept. 18—Hot dogs on buns, trimmings, wax beans, french fries, pudding, milk.

Tuesday, Sept. 19—Meat and vegetable casserole, polka dot salad, bread and butter, apple crisp, juice, milk.

Wednesday, Sept. 20—Hamburgers with gravy, mashed potatoes, buttered mixed vegetables, rolls and butter, dish fruit, milk.

Thursday, Sept. 21—Goulash and cheese, buttered corn, bread and butter, Jell-O, cake, milk.

Friday, Sept. 22—Fishwiches on bun, tartar sauce, potato chips, fruit salad, ice cream and cookie, milk.

Boy Scout Troop Plans Paper Pick-up

Boy Scout Troop 476 will be having a paper drive on Sept. 16. Both newspapers and magazines will be accepted and taken, provided they are tied in separate bundles. Anyone wishing to have papers picked up should please tie them if possible and call one of the following: Willis Heydlauff, 475-2392; Otis Titus, 475-4943; Cecil Cobb, 475-7236; or Dick Kalmbach, 475-7656.

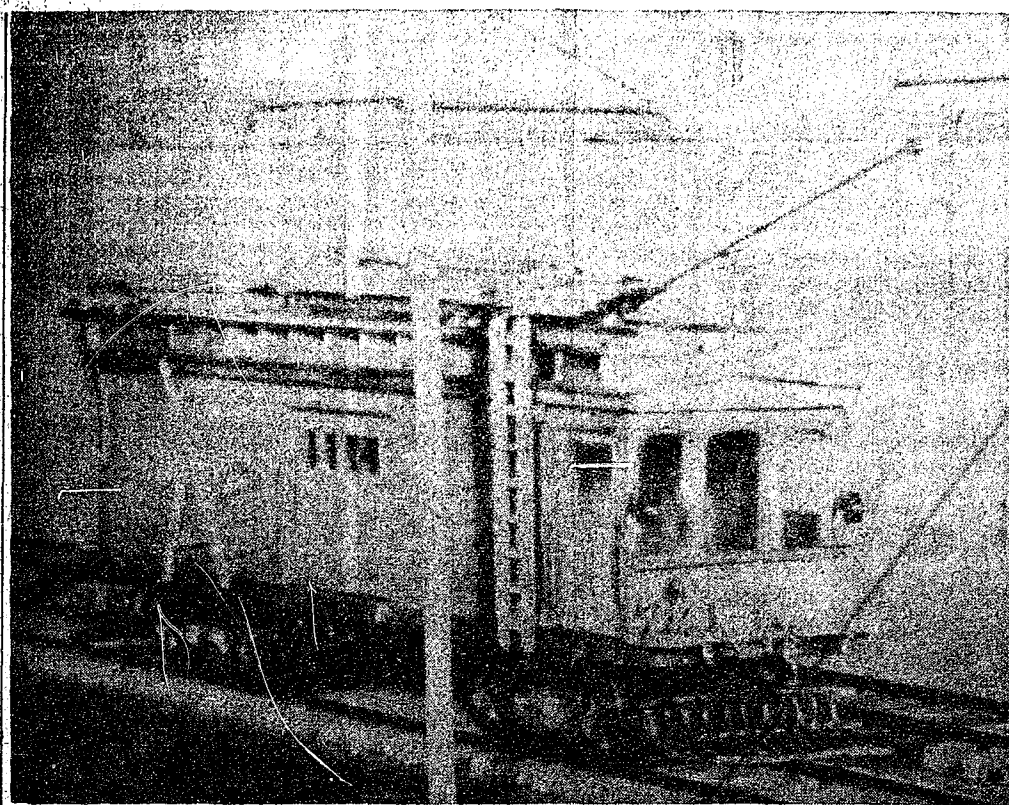
Cassidy Lake School Director Helping with New Math Program

George H. Outlaw, Director of Education, Cassidy Lake Technical School, has been selected to participate in the final developmental stages of a new, multimedia mathematics program for elementary and secondary schools throughout the U. S., created by Educational Developmental Laboratories, a division of McGraw-Hill Book Co., New York.

Outlaw is one of 165 teacher-consultants who will advise, direct, and provide experimental research on this highly individualized, instrument-oriented mathematics laboratory.

He will be responsible for checking the system's audio-visual media and materials, measuring students' performance and identifying the areas of strong student interest. This co-operation with EDL-McGraw-Hill will enhance the success and viability of the new curriculum, as well as Outlaw's own expertise in the area of instructional technology.

The Clarke Historical Library at Central Michigan University has 26,000 books, periodicals and newspapers, and 46,000 manuscript, pamphlets, maps and pictures relating to the history of the Great Lakes area.



OLD-TIMERS REMEMBER DUR: This is a scale-model of the old DUR line cars that ran through Chelsea in the early 1900's. Wallace Fisk, a former Chelsea resident, built the wooden replica. His father, Edward Fisk, worked as a lineman for the DUR during its brief existence.

Ex-Chelsea Resident Recalls Short Life of Interurban Line

Several months ago, The Standard received a letter from an ex-resident and reader saying he would like to see an article in the paper on the DUR (Detroit United Railroad), that formerly ran through Chelsea on its way from Detroit to Jackson.

Wallace Fisk, the author of the letter, had roots that extended far back into Chelsea's history. Born Oct. 30, 1911 to Mr. and Mrs. Edward Fisk, his ancestors had resided in Chelsea for quite a while. His grandfather had worked for Frank Glazier of Glazier stove fame, as a handyman since Glazier had started the stove works. By 1911, Granddad Fisk worked at the Glazier estate at Cavanaugh Lake, where his grandson, Wally, loved to visit and hang around the old pump house and deer barn. Wally's father, Edward, also worked for Glazier, and Wally himself got into the act by occasionally mowing their lawn in spite of the ferocious mosquitoes.

By the time he grew up, his father, Edward, was working as a lineman for the DUR, an electric line that ran from Detroit to Jackson. The line was originally entitled the DJC, the "D" for Chicago, but somehow the plans got waylaid and the line never made it past Jackson.

The line ran along side the United Methodist Home, down to Van Buren St., through the peat marsh and on toward Ann Arbor. The depot was situated at the corner of Van Buren and S. Main where Jim's Union 76 gas station is now located. (Ironically symbolizing the take-over of gas-propelled cars rather than electricity-supplied trains). Federal Screw Works plant sits on part of the old right-of-way.

The electric interurbans were built mainly to meet the need for the movement of passengers over short distances, and were usually extensions of the electric street railways of the city. (Most cities had electrified their horsecar lines by the early 1900's.) The interurbans corresponded with the mushrooming of the cities during that period, and with homes located further from the central city, some form of transportation was needed. Most of the interurban cars were of wooden construction, approximately 50 feet long, although later steel cars were used

that measured about 67 feet. The cars usually had a compartment for baggage and express. They were powered by a motor, which was located between the axle and the springs of the car, that engaged a cogwheel on the axle.

By 1916, the interurbans were at the height of their popularity, with 981 miles of lines in Michigan alone. By 1900, Detroit was already the "interurban capital of the world" for it had more extensive mileage within the city limits than any other city in the U. S. The title was ripped from its hands in 1903, however, by Indianapolis.

The entire interurban system got under way when the Detroit, Ypsilanti, Ann Arbor Railroad Co. (which extended to Jackson by 1901) was incorporated on Nov. 3, 1897. The entire network was then amalgamated into the Detroit United Railroad System in 1901 by the Everett-Moore Syndicate, which also operated the street railway in Detroit. Everett and Moore were two Ohio capitalists who had substantial investments in local telephone companies and streetcar lines, and could thus afford to dabble in what looked like "the thing of the future."

But the electric interurbans died almost as quickly as they were born. Even early in the interurban era it was apparent that the profit potential of the lines was exaggerated and that their future was colored a little too rosy. In 1910, the Michigan Railroad Commission revealed that six out of its 17 lines were operating at a deficit. So, even before other forms of transportation came into the picture, the industry was not in sound condition.

The most obvious cause of the interurban's troubles was the great increase in the number of people who owned automobiles. In 1915, motor vehicle registration was listed as 115,000; by 1920, it was at 413,000 and by 1925, it had jumped to 989,000.

Other causes were improvements of the roads and difficulties with municipalities over franchises. Truck and bus competition also hurt, for many of their lines ran parallel to the interurban lines. Some of the companies saw this as an opportunity to switch businesses and Detroit United was in the bus bus-

iness by 1924, although they were unsuccessful at that also, for they were weighed down with enormous capital investments.

By 1929, the DU line to Jackson halted operation. Although the depression hastened the end of the interurbans, they did not cause their death. The interurbans simply met a need that was later met by other more modern means. But, looking at the traffic congestion today, one wonders if the interurbans weren't perhaps the answer after all.

And what about Wally? Well, he grew up and worked for Central Fibre for 4½ years before moving to Latrobe, Pa. Although "I've never been sorry I left," Fisk comments, he still keeps up on the affairs of Chelsea and assures us that "Don Bacon was a good man to work for." Fisk's mother, Mrs. Edward Fisk, still resides in Chelsea, however, with Wallace's sister, Mrs. John Hanna, 230 E. Middle.

SPORTS IN PERSPECTIVE

Just because a man is a good sport doesn't necessarily mean he is a good man.

Kidney Fund Drive Needs Volunteers To Sell Candies

Volunteers are needed throughout the county to sell hand puppets containing trick-or-treat Halloween candy, according to Mrs. Jean Weller, volunteer area chairman for the Kidney Foundation of Michigan's annual drive.

The candy is packaged in "ghost" and "pumpkin" puppets. Contents of the package are a pound of individually wrapped hard candy and 12 trick-or-treat bags for repackaging of the candy for passing out on Halloween.

Proceeds from the sale are used to purchase medication for kidney disease patients as well as post-transplant patients.

Volunteers in Chelsea, Dexter, Manchester, Milan, Whitmore Lake and Pinckney are especially needed. Anyone interested may reach Mrs. Weller at 761-4221.

CORRECTION

The color-bearers in the Chelsea Community Fair parade were incorrectly reported. The VFW and the VFW Ladies Auxiliary were the actual color-bearers, not the American Legion.

E. Girbach Named Livestock Chairman for 4-H Bonanza

Ernest Girbach of Saline, chairman of Michigan State Fair Authority, was recently appointed chairman of the general livestock committee for an event supporting Michigan 4-H youth, according to Duncan E. Sanford, Washtenaw 4-H Youth Agent.

The event, 4-H Bonanza, is a co-operative effort by Michigan agriculture, education and industry to help raise money for Michigan 4-H programs.

Girbach accepted the appointment from Bonanza's chairman: Dr. Clifton R. Wharton Jr., president of Michigan State University; Elton Smith, president of the Michigan Farm Bureau; and Benson Ford, vice-president and director of Ford Motor Co.

The first event of its kind in the nation, Bonanza will feature an auction-exhibition of all types of Michigan agricultural and industrial products and entertainment by such nationally known celebrities as Art Linkletter. The Michigan 4-H Foundation is sponsoring the event and hopes to raise \$250,000.

As chairman of the general livestock committee, Girbach will or-

ganize statewide livestock support for bonanza and involve key individuals throughout the counties.

According to Ralph E. Kirch, the executive director of the Michigan 4-H Foundation, one of the main purposes of Bonanza is to involve people from all segments of the Michigan population in mutual support of 4-H.

Girbach has been an active supporter of 4-H and youth for several years. His contributions to agriculture in general have been recognized throughout the state. The 4-H Bonanza will be held Oct. 14 in Jenison Fieldhouse at Michigan State University.

Subscribe today to The Standard.

LOSE UGLY FAT

Start losing weight today OR MONEY BACK. MONADEX is a tiny tablet that will help curb your desire for excess food. Eat less-weigh less. Contains no dangerous drugs and will not make you nervous. No strenuous exercise. Change your life start today. MONADEX costs \$3.00 for a 20 day supply and \$5.00 for twice the amount. Lose ugly fat or your money will be refunded with no questions asked by: CHELSEA DRUG STORE - CHELSEA Mail Orders Filled



- ★ Oxford cloth
- ★ New longer Cory button-down collar
- ★ Smart double-button cuffs
- ★ Machine washable and dryable

\$9.00

STRIETER'S MEN'S WEAR

"The Place To Go for Brands You Know"

5% down - 30 years to repay GOLD KEY MORTGAGES

The maximum amount for a Gold Key Mortgage has been raised to \$36,000.00. This means you can have your dream home a lot sooner than you expected. As an example:

Cost of house	\$37,900.00
Down payment	1,900.00
Mortgage	\$36,000.00
36 monthly payments based on 8 1/4% interest rate (annual percentage rate 8 1/2%)	\$270.46 plus tax & insurance escrows

Gold Key Mortgage is a conventional AAFS Mortgage with rates ranging from 8-8 1/2%. No service fee is required. Commitment fee is 1/2% for 90 day period, plus 1% closing costs for Mortgage Insurance premium.

So stop in or call 683-7555 and let our mortgage experts work out the details. Or ask your Realtor or Builder about Gold Key Mortgages.



ANN ARBOR FEDERAL SAVINGS

the savings and loan specialists

Member: Federal Home Loan Bank System • Federal Savings and Loan Insurance Corporation

GRAND OPENING SALE CONTINUED ONE MORE WEEK

We wish to thank everyone who made our Grand Opening Sale last week a huge success. In appreciation we will continue the sale another week.

Winners in our door prize drawings:

Mrs. Sis Allen, 1725 Old US-12 Arm Chair
Ken Piatt, 15631 Waterloo Rd. Bicycle

WESTERN AUTO

178 S. Main St., Chelsea Phone 475-4721

RICK'S MARKET

"Your Spartan Store"

M-52 North of Chelsea Phone 475-2898

OPEN 7 DAYS A WEEK 8 a.m. to 10 p.m.

Prices Effective Thurs., Fri., Sat., Sunday, Sept. 14, 15, 16, 17

Now - Only at RICK'S BAR-B-Q Chicken & SPARE RIBS

BORDEN'S LO-FAT MILK . gal. 79¢

GLACIER CLUB (All Flavors) ICE CREAM 1/2 gal. 49¢

1-LB. CARTON BORDEN'S COTTAGE CHEESE .. 29¢

PURINA HI-PROTEIN DOG FOOD . 25-Lb. Bag \$3.09

30-BAR BAG NESTLE CANDY BARS 99¢

Also Featuring HOT SANDWICHES

- ★ Polish Kielbasa
- ★ Bar-B-Q Beef
- ★ Submarines
- ★ Stacked Ham
- ★ Stacked Ham & Cheese

1 1/4-LB. LOAF SPARTAN BREAD 5 for \$1

6 1/2-OZ. CAN CHICKEN OF THE SEA TUNA .. 39¢

PILLSBURY, BETTY CROCKER, DUNCAN HINES CAKE MIXES .. 3 for \$1

VOORTMAN'S DUTCH STYLE COOKIES . . 3 pkgs. \$1

ICE COLD BEER WINE - LIQUOR